



DUAL LATERLOG
COMPENSATED Z-DENSLOGSM
COMPENSATED NEUTRON LOGSM
CROSS-MULTIPOLE ARRAY ACOUSTIC LOGSM
GAMMA RAY LOGSM
X-Y AXIS CALIPER LOG

Baker Atlas

FILE NO:	COMPANY	VULCAN MINERALS INC.
WELL	VULCAN INVESTCAN RED BROOK #2	
API NO:	FIELD	BAY ST. GEORGE BASIN
PROVINCE	NEWFOUNDLAND AND LABRADOR	
Ver. 3.87	LOCATION:	OTHER SERVICES
UID:	BH LOC. LSD:	ZDL-CN-GR-XYCAL XMAC-GR-CAL, CYL DLL-GR, DSL
LICENSE:	LAT	LONG
ADW 2009-116-03-	48.2679591667	-58.7501141667
PERMANENT DATUM	G.L.	ELEVATION
LOG MEASURED FROM	K.B.	6.3 M
DRILL MEAS. FROM	KELLY BUSHING	ABOVE P.D.
ELEVATIONS:	KB	61.8 M
DF	GL	55.5 M
DATE	09-NOV-2009	
RUN	TRIP	1 2
SERVICE ORDER	CA206497	
DEPTH DRILLER	889.0 M	
DEPTH LOGGER	888.2 M	
BOTTOM LOGGED INTERVAL	887.7 M	
TOP LOGGED INTERVAL	20.0 M	
CASING DRILLER	339.7 MM	220.2 M
CASING LOGGER	220.2 M	
BIT SIZE	311.0 MM	
TYPE OF FLUID IN HOLE	BRINE	
DENSITY	1240.0 G/L	69.0 S
PH	10.8	18.4 ML
SOURCE OF SAMPLE	TOOL MEASURED	
RM AT MEAS. TEMP.	0.07 OHMM	21.0 DEGC
RM AT MEAS. TEMP.	0.06 OHMM	21.0 DEGC
RMC AT MEAS. TEMP.	0.08 OHMM	21.0 DEGC
SOURCE OF RMF	RMC	
RM AT BHT	0.07 OHMM	19.9 DEGC
TIME SINCE CIRCULATION	13.5 HOURS	
MAX. RECORDED TEMP.	20.1 DEGC	
EQUIP. NO.	4126	OH SARNIA
RECORDED BY	D. SHKOLNIKOV	
WITNESSED BY	M. SMITH	

IN MAKING INTERPRETATIONS OF LOGS OUR EMPLOYEES WILL GIVE CUSTOMER THE BENEFIT OF THEIR BEST JUDGEMENT. BUT SINCE ALL INTERPRETATIONS ARE OPINIONS BASED ON INFERENCES FROM ELECTRICAL OR OTHER MEASUREMENTS, WE CANNOT, AND WE DO NOT GUARANTEE THE ACCURACY OR CORRECTNESS OF ANY INTERPRETATION. WE SHALL NOT BE LIABLE OR RESPONSIBLE FOR ANY LOSS, COST, DAMAGES, OR EXPENSES WHATSOEVER INCURRED OR SUSTAINED BY THE CUSTOMER RESULTING FROM ANY INTERPRETATION MADE BY ANY OF OUR EMPLOYEES.

BOREHOLE RECORD

BIT SIZE	FROM	TO
444.5 MM	0.0 M	220.2 M
311.0 MM	220.2 M	889.0 M

CASING RECORD

SIZE	WEIGHT	GRADE	FROM	TO
339.7 MM	71.4 KG/M	J-55	0.0 M	220.2 M

REMARKS

RUN 1 TRIP 2 : TIME STOPPED CIRCULATION: 09-NOV-2009 08:10 PM

DESCENT 1: XMAC-GR/DSL
DECENT 2: ZDL-CN-GR
DESCENT 3: DLL-GR
CNC IS ZDL CALIPER CORRECTED.
CNC AND PORZ RECORDED AND PRESENTED IN SANDSTONE MATRIX 2.65G/CM3.
CNC IS CORRECTED FOR 444.5 MM BIT SIZE BEHIND CASING FROM 220.2 M TO SURFACE
AND PRESENTED BELOW REPEAT PASS

DLL LOGGED IN ENHANCED MODE.
FORMATION RESISTIVITY IN MOST LOGGING INTERVAL ABOVE TOOL SPECIFICATIONS.

INTEGRATED TRANSIT TIME TICS EVERY: 1.0, 10.0, & 100.0 µSEC.

EQUIPMENT DATA

RUN	TRIP	TOOL	SERIES NO.	SERIAL NO.	POSITION
1	2	FOCUS SWIVE	3950XA	10128472	FREE
1	2	TTMA SUB	3980XA	402454	FREE
1	2	2-ARM CAL	4410XA	10171015	FREE
1	2	DBL KNIT	3931XA	10216109	FREE
1	2	COMM/POWER	3518FB	10395839	DECENTRALIZED
1	2	COMM/GR	3518EB	10386766	DECENTRALIZED
1	2	FOCUS CN	2436XA	402534	DECENTRALIZED
1	2	FOCUS ZDEN	2223XA	10130454	PAD DEVICE

INSTRUMENT CONFIGURATION

Source File: /dat1a/pass/vul_rb2/k740d"-tdg

CABLEHEAD
Series : CABLE308
Mononic : CBLH
Diameter : 8.6 cm
Length : 187.8 cm
Measure Point: 83.8 cm: CABLEHEAD TOP

10.08 m
CABLEHEAD TOP 10.26 m

WTS COMMON REMOTE
Series : 3514XB
Mononic : WTS
Diameter : 9.2 cm
Length : 194.0 cm

DIGITAL SPECTRANLOG
Series : 1328WA
Mononic : DSL
Diameter : 9.2 cm
Length : 222.8 cm
Measure Point: 46.8 cm: GR MP

GR MP 13.74 m

4 ARM BOX SPRING CENTRALIZER
Series : 4341XA
Mononic : CENT
Diameter : 8.6 cm
Length : 126.8 cm

ARRAY ACQUITTLOS ELECTRONICS

Series : 18676A
Mononic : DAC
Diameter : 8.6 cm
Length : 238.3 cm

CROSS MULTIPOLE ARRAY ACQUITTLOS

Series : 18789A
Mononic : XMAC
Diameter : 9.8 cm
Length : 332.4 cm
Measure Point: 187.8 cm: R8
Measure Point: 182.4 cm: R7
Measure Point: 137.2 cm: R6
Measure Point: 121.9 cm: R5
Measure Point: 108.7 cm: R4
Measure Point: 91.4 cm: R3
Measure Point: 78.2 cm: R2
Measure Point: 61.0 cm: R1

R8 : 7.06 m
R7 : 7.81 m
R6 : 7.96 m
R5 : 7.51 m
R4 : 7.35 m
R3 : 7.20 m
R2 : 7.05 m
R1 : 6.90 m

MULTI-POLE ARRAY ACUSTIC

Series : 10089A
Mononic : MAC
Diameter : 9.2 cm
Length : 182.4 cm

MONOPOLE T2 MP : 4.31 m
DIPOLE T4 MP : 4.08 m
DIPOLE T3 MP : 3.77 m
MONOPOLE T1 MP : 3.65 m

MULTI-POLE ARRAY ACUSTIC

Series : 10089A
Mononic : MAC
Diameter : 9.2 cm
Length : 210.8 cm
Measure Point: 185.1 cm: MONOPOLE T2 MP
Measure Point: 142.2 cm: DIPOLE T4 MP
Measure Point: 111.8 cm: DIPOLE T3 MP
Measure Point: 88.9 cm: MONOPOLE T1 MP

MULTI-POLE ARRAY ACUSTIC

Series : 10089A
Mononic : MAC
Diameter : 8.6 cm
Length : 131.8 cm

4 ARM BOX SPRING CENTRALIZER

Series : 43411A
Mononic : CENT
Diameter : 8.6 cm
Length : 126.8 cm

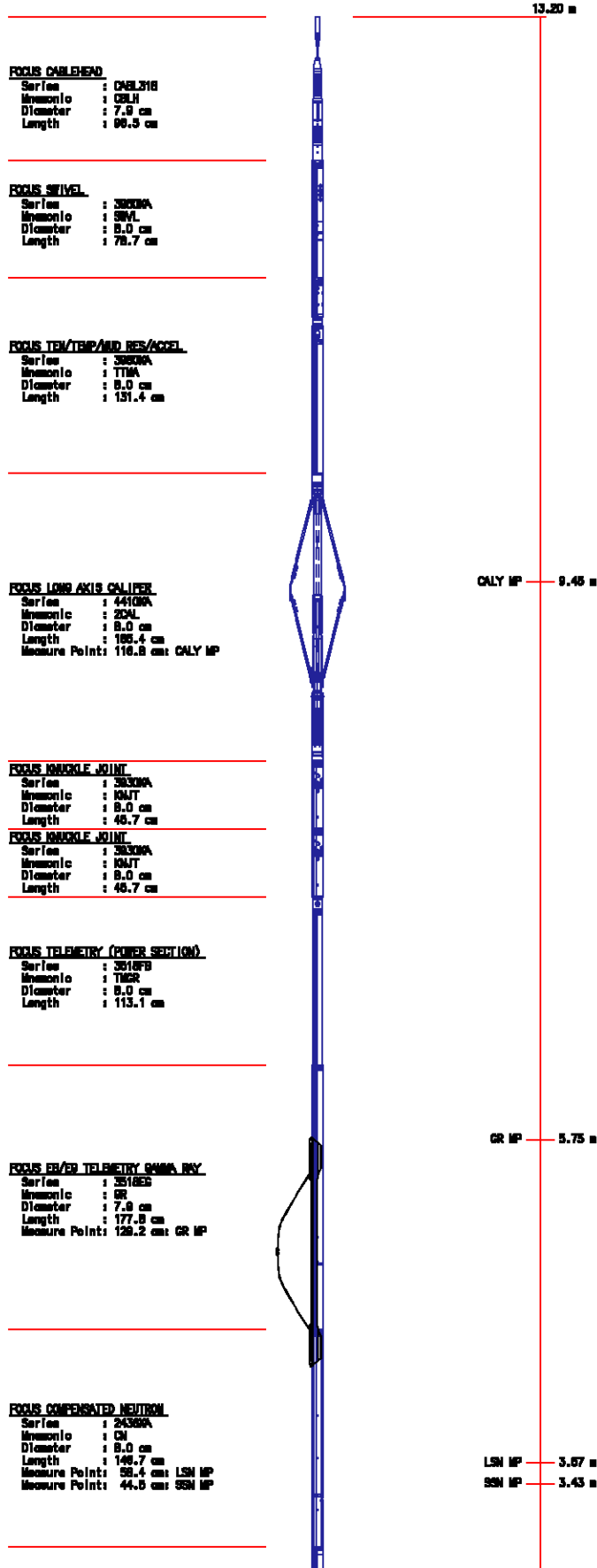
BULL PLUG 3 3/8

TOTAL LENGTH: 18.09 m
TOTAL WEIGHT: 484.6 kg
MAX DIAMETER: 9.8 cm

0.00 m

INSTRUMENT CONFIGURATION

Source File: /dat1a/pass/vul_rb2/k970a"-tdg



FOCUS Z-SENS1100

Series : 22230A
Manufacturer : ZDL
Diameter : 9.6 cm
Length : 292.1 cm
Measure Point: 132.1 cm: CR1 MP
Measure Point: 51.4 cm: LSD / CR2 MP
Measure Point: 35.4 cm: SSD MP

CR1 MP 1.39 m

LSD / CR2 MP 0.58 m

SSD MP 0.46 m

0.00 m

BAL FLUR 3 1/8

TOTAL LENGTH: 15.20 m
TOTAL WEIGHT: 324.1 kg
MAX DIAMETER: 0.3 cm

INSTRUMENT CONFIGURATION

Source File: /dat1a/pass/vul_rb2/k773v"-tdg

23.43 m

CABLEHEAD

Series : CABLE308
Manufacturer : CBLH
Diameter : 8.6 cm
Length : 167.8 cm
Measure Point: 83.8 cm: CABLEHEAD TOP

CABLEHEAD TOP 22.58 m

MASS ISOLATION SUB - 12' JOINT

Series : 39072A
Manufacturer : ISSB
Diameter : 8.6 cm
Length : 381.9 cm

SP MP 16.14 m

MASS ISOLATION SUB - 12' JOINT WITH SP

Series : 3007NA
Nomencl : ISSB
Diameter : 8.6 cm
Length : 381.9 cm
Measure Point: 381.9 cm: SP MP

WTS COMMON REMOTE

Series : 3514XB
Nomencl : WTS
Diameter : 9.2 cm
Length : 184.0 cm

DIGITAL SPECTRUM LOG

Series : 1220XA
Nomencl : DSL
Diameter : 9.2 cm
Length : 222.8 cm
Measure Point: 48.8 cm: GR MP

GR MP 10.84 m

ISOLATION RETURN SUB

Series : 3002DA
Nomencl : ISSB
Diameter : 9.2 cm
Length : 65.5 cm

SLAM ADAPTER

Series : 3516DA
Nomencl : SLAM
Diameter : 8.6 cm
Length : 180.7 cm

ISOLATION RETURN SUB

Series : 3007XB
Nomencl : ISSB
Diameter : 9.2 cm
Length : 68.7 cm

HAL LATERALOG HI-TEMP ELECTRONICS

Series : 1230EA
Nomencl : DLIS
Diameter : 8.6 cm
Length : 187.3 cm

MAIN LATERAL LOG MODEL
 Series : 12300A
 Mononic : DLS
 Diameter : 9.2 cm
 Length : 357.8 cm
 Measure Point: 179.1 cm: RS/RO MP

RS/RO MP 3.86 m

CHINA RAY
 Series : 13000A
 Mononic : GR
 Diameter : 9.2 cm
 Length : 188.4 cm
 Measure Point: 40.6 cm: GR MP

GR MP 0.46 m

HAL PLUS 3 3/8

0.00 m

TOTAL LENGTH: 25.43 m
 TOTAL WEIGHT: 477.3 kg
 MAX DIAMETER: 10.8 cm

MAIN LOG - SANDSTONE MATRIX

ECLIPS 6.0i Feb 21, 2008
Updates: 1

Tue Nov 10 11:43:31 2009

Prclt /main/62

Cplot

Pdf_Cpp /main/16

Fileview 5.42

PARAMETER AND FILTER SUMMARY REPORT

FILE: /data/pass/vul_rb2/k740d02.prm
 LOGGING MODE: DEPTH
 TOP DEPTH: 181.889 m

DIRECTION: UP
 BOTTOM DEPTH: 890.827 m

SYMMETRIC FILTER

MEASUREMENT TYPE	PARAMETER	VALUE	UNITS	INTERVAL (m)
TENSION	FILTER ()	medium (1)		TOP BOTTOM
GR	FILTER ()	medium (1)		" "

BOREHOLE & CEMENT

MEASUREMENT TYPE	PARAMETER	VALUE	UNITS	INTERVAL (m)
BIT SIZE	BIT SIZE	311.000	mm	TOP BOTTOM

ACOUSTIC AVAN CORRELATON

MEASUREMENT TYPE	PARAMETER	VALUE	UNITS	INTERVAL (m)
MONOPOLE COMPRESSIONAL	FORMATION TYPE	UNIVERSAL		TOP BOTTOM
	CORRELATION METHOD	NTH ROOT		" "
	RESET TAPERS			" "
	TAPER - LEFT END	110	us/m	TOP 819.074
		100	us/m	819.074 845.439
		110	us/m	845.439 848.487
		98	us/m	848.487 BOTTOM
	TAPER - RIGHT END	390	us/m	TOP 791.337
		370	us/m	791.337 820.445
		350	us/m	820.445 830.809

FLOOR (UNIV. OPTION)		330 350	us/m us/m	830.809 850.468	850.468 BOTTOM
		0.050		TOP	BOTTOM
ACOUSTIC WAVEFORM FILTER					
MEASUREMENT TYPE	PARAMETER	VALUE	UNITS	INTERVAL (m)	
WAVEFORM FILTER - FULLWAVE	SURFACE WAVE FILTER	ON		TOP	BOTTOM
	LOW FREQ CUTOFF	1500	Hz	''	''
	HIGH FREQ CUTOFF	20000	Hz	''	''
ACOUSTIC TCC CONTROL PARAMETERS					
MEASUREMENT TYPE	PARAMETER	VALUE	UNITS	INTERVAL (m)	
GENERAL TCC PARAMETERS	AGC	ON		TOP	BOTTOM
GENERAL MONOPOLE TCC PARAMETERS	STACK LEVEL	1		''	''
	LOW FREQ	500		''	''
	HIGH FREQ	23		''	''
FULL WAVE MONOPOLE TCC PARAMETERS	ACG WINDOW	5184	us	''	''
	SAMPLE PERIOD	12		''	''
	RX DELAY	0	us	''	''
PARAMETER AND FILTER SUMMARY REPORT					
FILE: /data/pass/vul_rb2/k773v02.prm LOGGING MODE: DEPTH DIRECTION: UP TOP DEPTH: 212.293 m BOTTOM DEPTH: 891.779 m					
SYMMETRIC FILTER					
MEASUREMENT TYPE	PARAMETER	VALUE	UNITS	INTERVAL (m)	
TENSION	FILTER ()	medium (1)		TOP	BOTTOM
GR	FILTER ()	medium (1)		''	''
DLL	FILTER ()	medium (1)		''	''
BOREHOLE & CEMENT					
MEASUREMENT TYPE	PARAMETER	VALUE	UNITS	INTERVAL (m)	
BIT SIZE	BIT SIZE	311.000	mm	TOP	BOTTOM
MUD SAMPLE RESISTIVITY	MUD SAMPLE TEMP	19.9	degC	''	''
	MUD SAMPLE RES	0.070	ohm.m	''	''
BOREHOLE TEMP from GRADIENT	Known BH REF TEMP	19.9	degC	''	''
	at BH REF DEPTH	300.0	m	''	''
	with TEMP GRADIENT	0.365	0.01 degC/m	''	''
BOREHOLE CORR DIAMETER SOURCE	CALIPER/FIXED DIA. (dibh*)	USE FIXED SIZE		''	''
BOREHOLE CORR DIAMETER	FIXED DIAMETER (dibh*)	311.000	mm	''	''
BH MUD RESISTIVITY SOURCE	RMUD SOURCE	MUD SAMP DERIVED		''	''
DLL PROCESSING					
MEASUREMENT TYPE	PARAMETER	VALUE	UNITS	INTERVAL (m)	
DLL BOREHOLE CORRECTION	BOREHOLE CORR	OFF		TOP	BOTTOM
	DEEP TYPE	ENHANCED		''	''
	SHALLOW TYPE	ENHANCED		''	''
	TOOL POSITION	CENTRALIZED		''	''
	DEEP CURRENT RTN.	STANDARD		''	''
	ARMOR ISOLATOR	DUAL 12' ISOLATORS		''	''
	GRONINGEN RTN. DIST	40 FT RETURN		''	''
PARAMETER AND FILTER SUMMARY REPORT					
File: /data/pass/vul_rb2/k970a03.prm LOGGING MODE: DEPTH DIRECTION: UP TOP DEPTH: 198.044 m BOTTOM DEPTH: 892.059 m					
SYMMETRIC FILTER					
MEASUREMENT TYPE	PARAMETER	VALUE	UNITS	INTERVAL (m)	
CHT	FILTER ()	medium (1)		TOP	BOTTOM
GR MED RES	FILTER ()	medium (1)		''	''
CALIPER	FILTER ()	medium (1)		''	''
TENSION	FILTER ()	medium (1)		''	''
CN MED RES	FILTER ()	medium (1)		''	''

CN MED RES	FILTER ()	medium	''	''
ZDL MED RES	FILTER (hrd1*)	medium	''	''
	FILTER (hrd1s*)	medium	''	''
	FILTER (hrd2*)	medium	''	''
	FILTER (hrd2s*)	medium	''	''
	FILTER (soft*)	medium	''	''

BOREHOLE & CEMENT					
MEASUREMENT TYPE	PARAMETER	VALUE	UNITS	INTERVAL (m)	
CASING - BOREHOLE & CEMENT VOLUME	CASING O.D.	244.500	mm	TOP	BOTTOM
	CASING THICKNESS	8.400	mm	''	''
X-Y COMBINED CALIPER PROCESSING-FOCM5Y	Caliper - FOCUS	X-Axis		''	''
BIT SIZE	BIT SIZE	311.000	mm	''	''
BOREHOLE CORR DIAMETER SOURCE	CALIPER/FIXED DIA. (cnbh*)	USE CALIPER		''	''
BOREHOLE CORR DIAMETER	FIXED DIAMETER (cnbh*)	311.000	mm	''	''

ACCELERATION PROCESSING					
MEASUREMENT TYPE	PARAMETER	VALUE	UNITS	INTERVAL (m)	
ACCEL CORR SWITCH	ACCEL DEPTH CORR	CORRECTION ON		TOP	BOTTOM

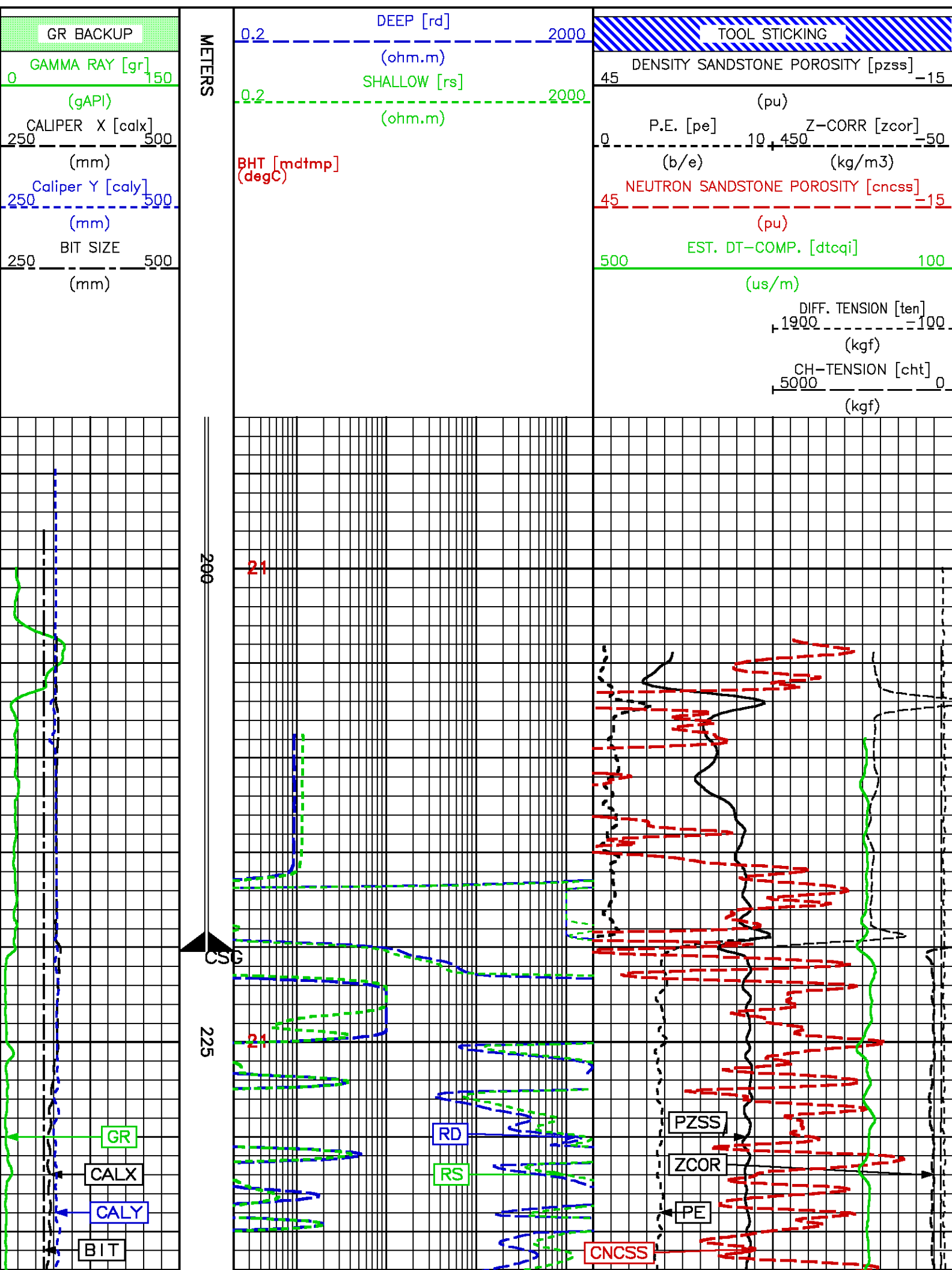
CN PROCESSING					
MEASUREMENT TYPE	PARAMETER	VALUE	UNITS	INTERVAL (m)	
CN BOREHOLE CORRECTION	SALINITY	0	ppm	TOP	BOTTOM
	BOREHOLE CORRECTION	ON		''	''
CN CASING & CEMENT CORRECTION	CORRECTION	OFF		''	''
	BIT SIZE BEHIND CSNG	444.500	mm	''	''

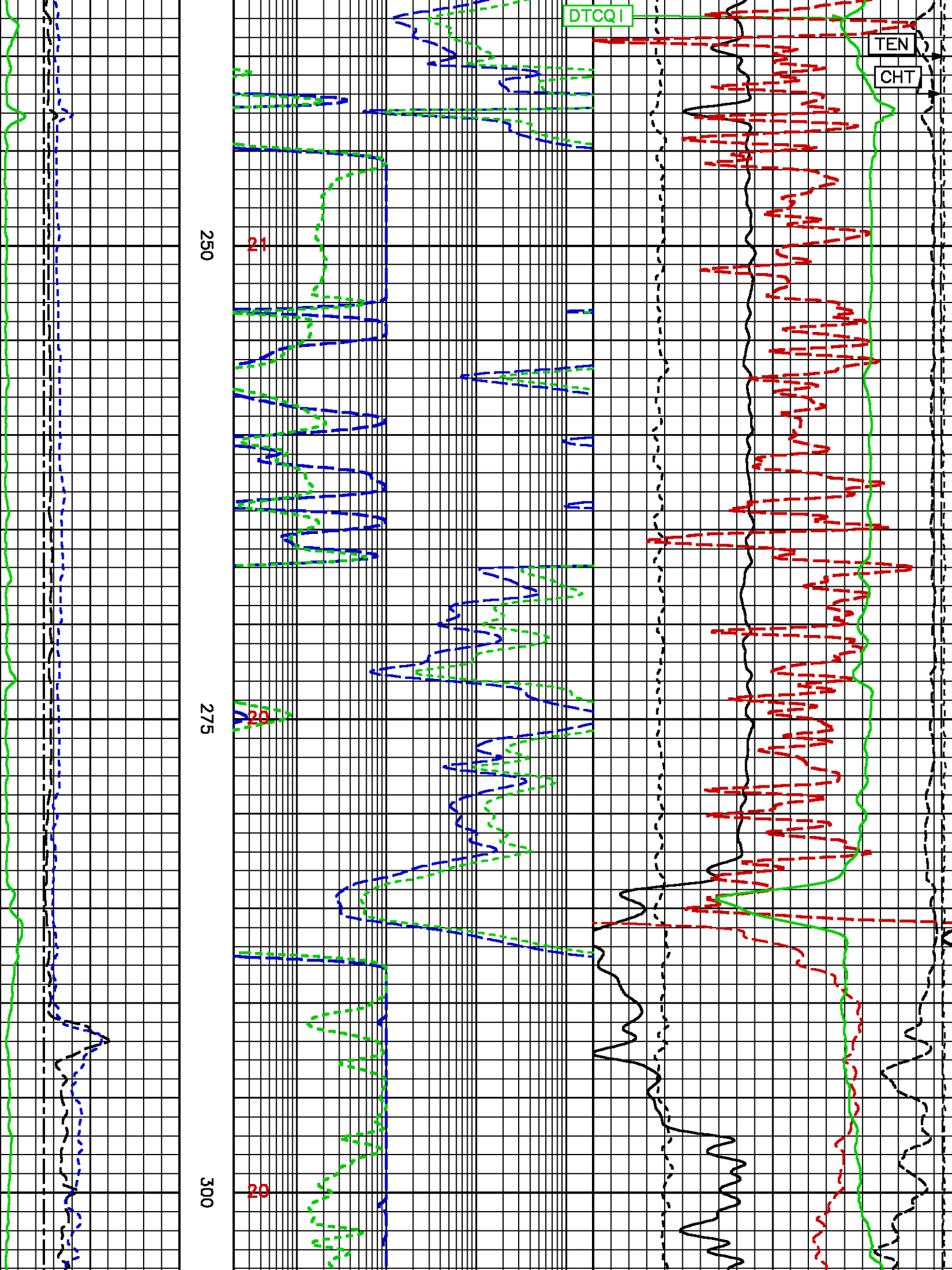
ZDL PROCESSING					
MEASUREMENT TYPE	PARAMETER	VALUE	UNITS	INTERVAL (m)	
DENSITY POROSITY	RHOfluid	1.000	g/cm3	TOP	BOTTOM
	RHOmatrix (sand)	2.650	g/cm3	''	''

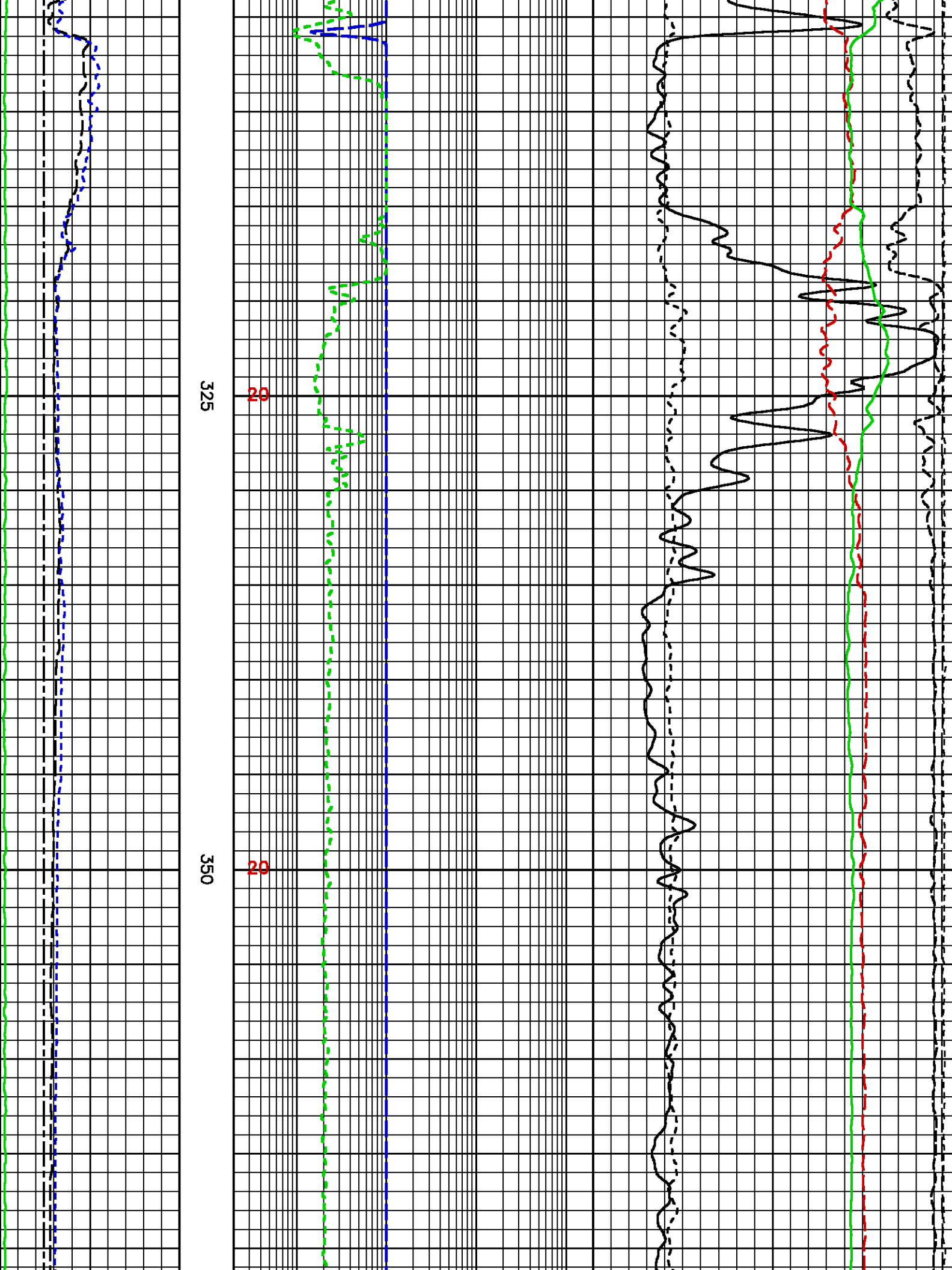
CURVE DESCRIPTION REPORT				
CURVE NAME	CURVE ALIAS	CREATION DATE	CURVE DESCRIPTION	
F1:BIT	BIT	Nov 10 03:05:18 2009	BIT SIZE	
F1:CALX	CALX	Nov 10 06:58:51 2009	CALIPER FROM X AXIS OF X-Y CALIPER(S)	
F1:CALY	CALY	Nov 10 06:58:51 2009	CALIPER FROM Y AXIS OF X-Y CALIPER(S)	
F1:CHT	CHT	Nov 10 06:58:51 2009	CABLE HEAD TENSION	
F1:CNCSS	CNCSS	Nov 10 06:58:51 2009	BH SIZE CORR. SANDSTONE COMPENSATED NEUTRON POROSITY	
F1:DTCQI	DTC	Nov 10 03:05:18 2009	COMPRESSIONAL WAVE SLOWNESS	
F1:GR	GR	Nov 10 03:05:18 2009	GAMMA RAY	
F1:MDTMP		Nov 10 06:58:51 2009	MUD TEMPERATURE	
F1:PE	PE	Nov 10 06:58:51 2009	PHOTO ELECTRIC CROSS-SECTION	
F1:PZSS	PZSS	Nov 10 06:58:51 2009	POROSITY FOR SANDSTONE MATRIX	
F1:RD	RD	Nov 10 09:42:41 2009	DEEP RESISTIVITY	
F1:RS	RS	Nov 10 09:42:41 2009	SHALLOW RESISTIVITY	
F1:TEN	TEN	Nov 10 03:05:18 2009	DIFFERENTIAL TENSION	
F1:ZCOR	ZCOR	Nov 10 06:58:51 2009	DENSITY CORRECTION	

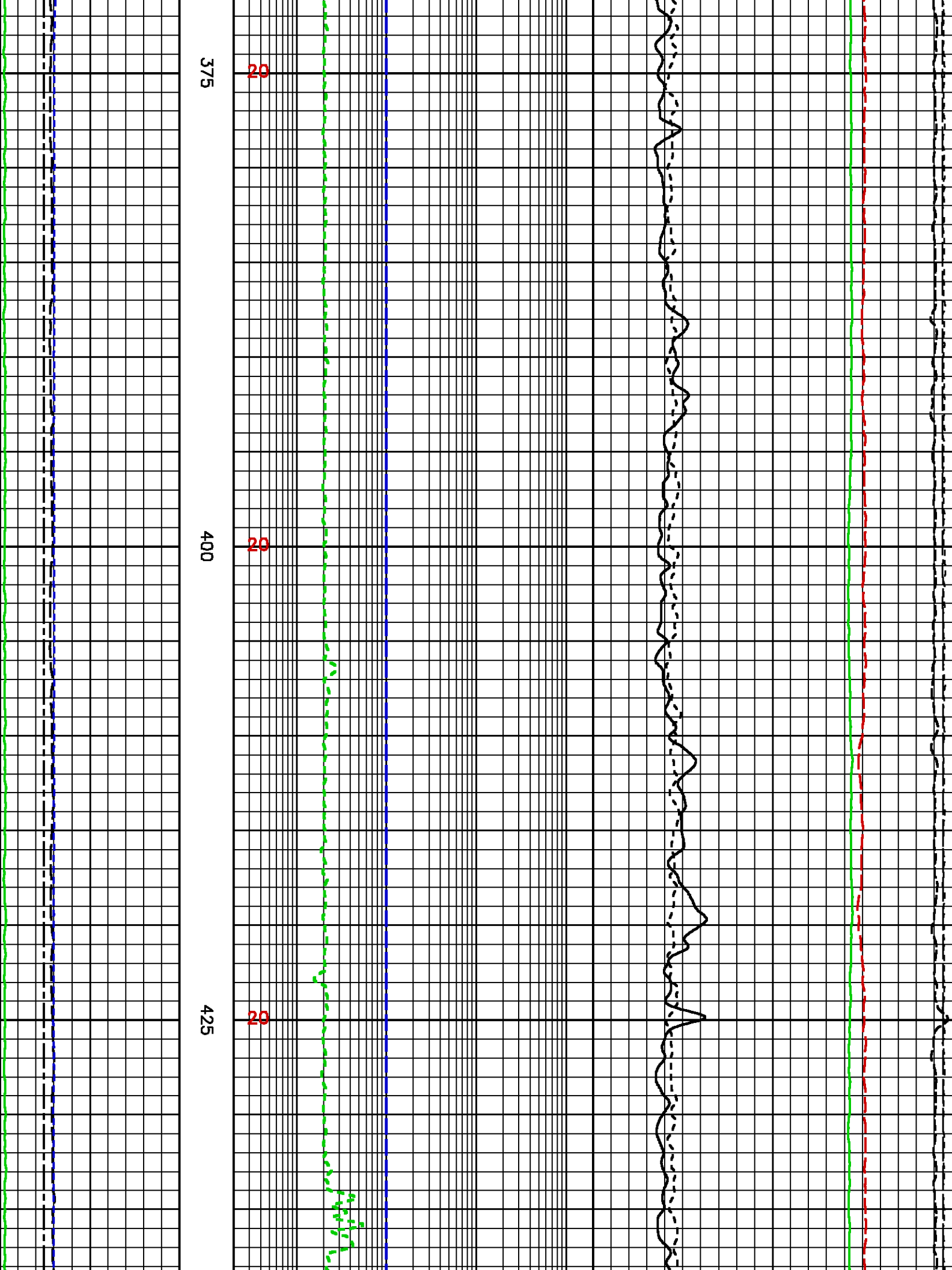
CURVE MEASURE POINT OFFSET							
CURVE	OFFSET (m)	CURVE	OFFSET (m)	CURVE	OFFSET (m)	CURVE	OFFSET (m)
BIT	0.00	CNCSS	3.35	PZSS	0.53	ZCOR	0.53
CALX	0.53	DTCQI	7.32	RD	3.81		
CALY	9.37	GR	13.64	RS	3.81		
CHT	0.00	PE	0.53	TEN	0.00		

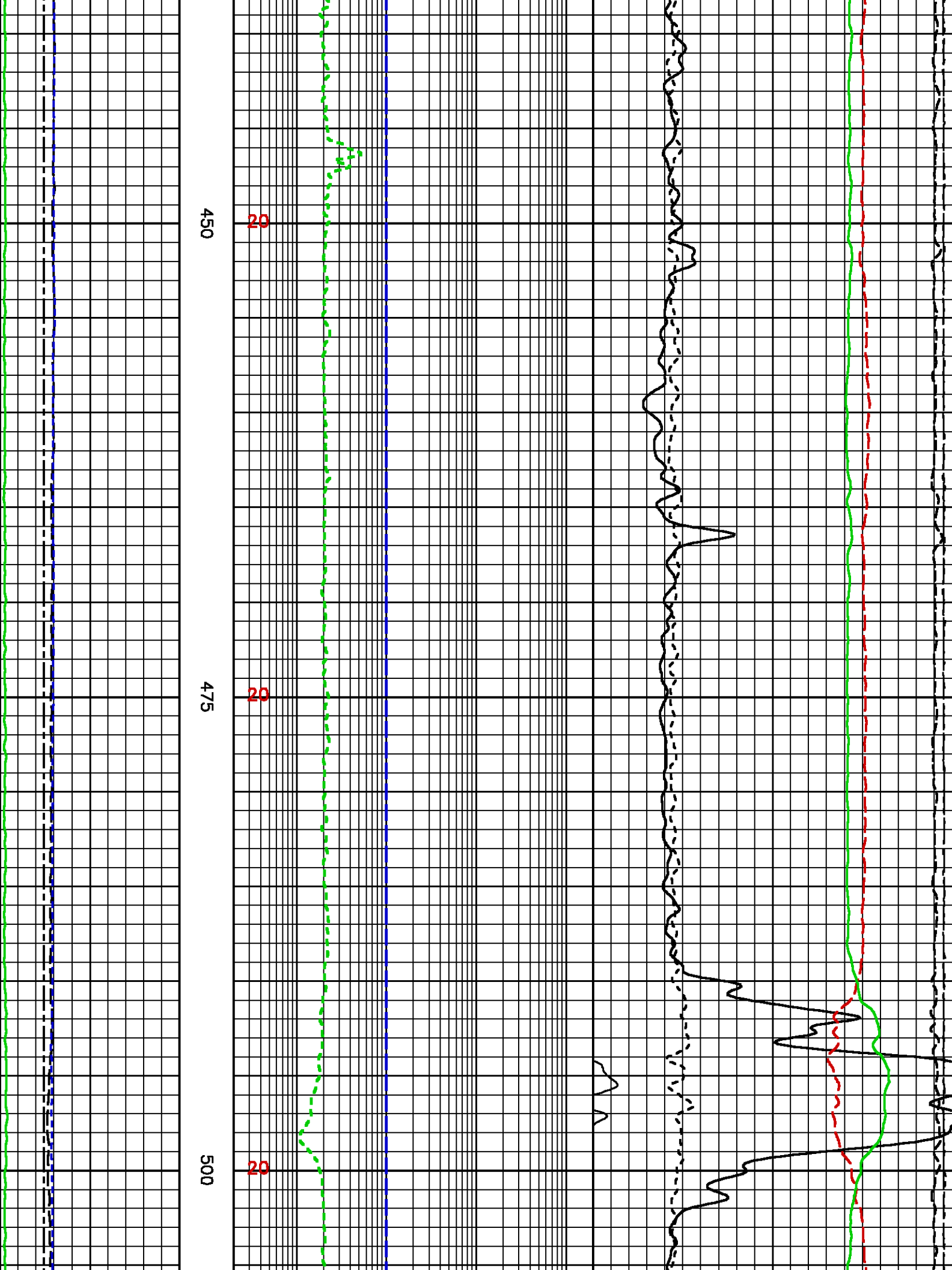
Presentation	: cpu1:/dat1a/pass/vul_rb2/comp2_ss45_main.pdf [1:240 Scale]
Plot Interval	: 192.786 - 893.293 Meters
Data File 1	: F1 : cpu1:/dat1a/pass/vul_rb2/311_main.xtf
Created On	: Nov 10 06:58:51 2009
Company	: VULCAN MINERALS
Well	: VULCAN INVESTCAN RED BROOK #2
Field	: BAY ST. GEORGE BASIN
File Interval	: 192.786 - 893.293 Meters
Oct	: k740d

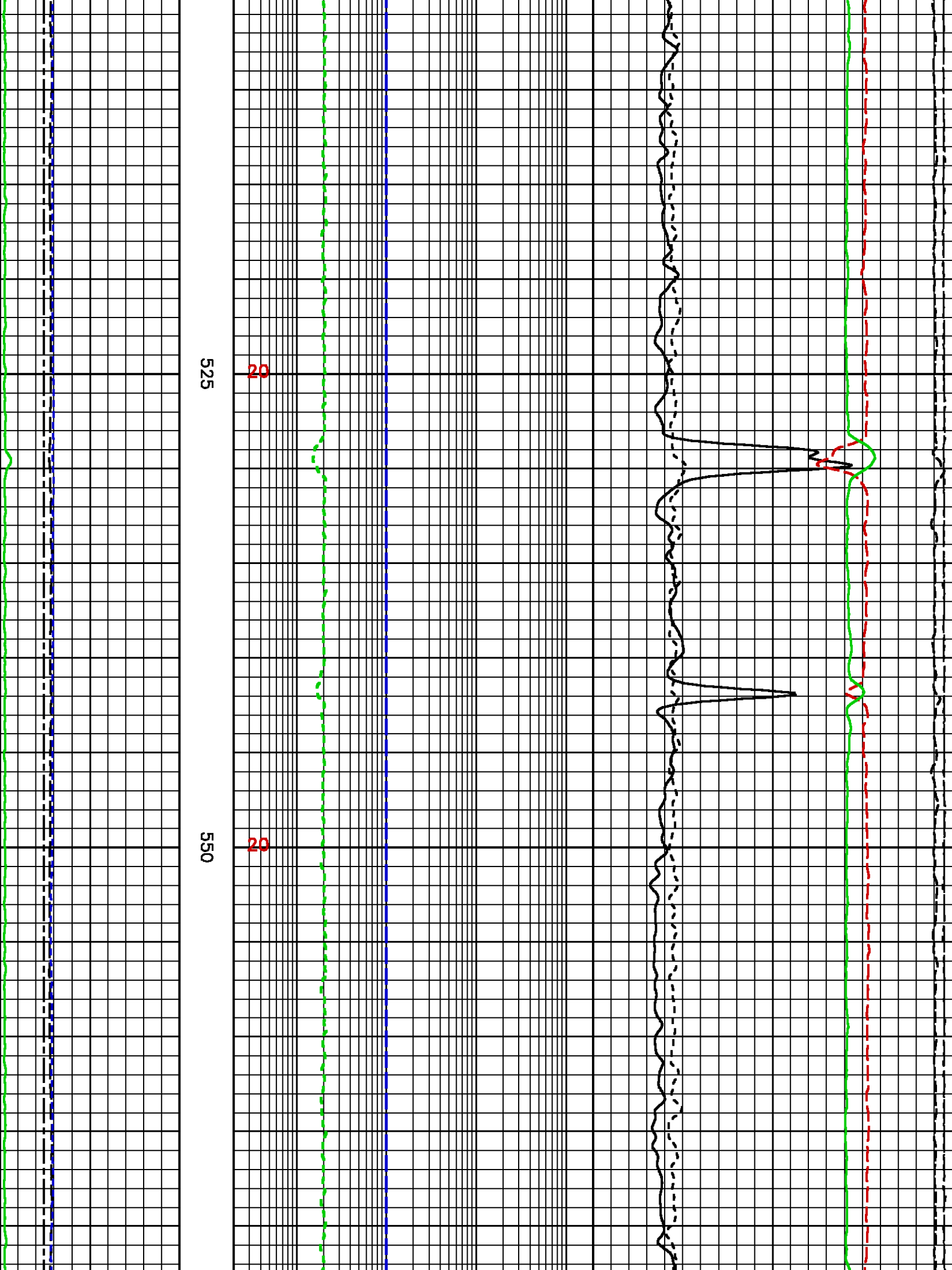










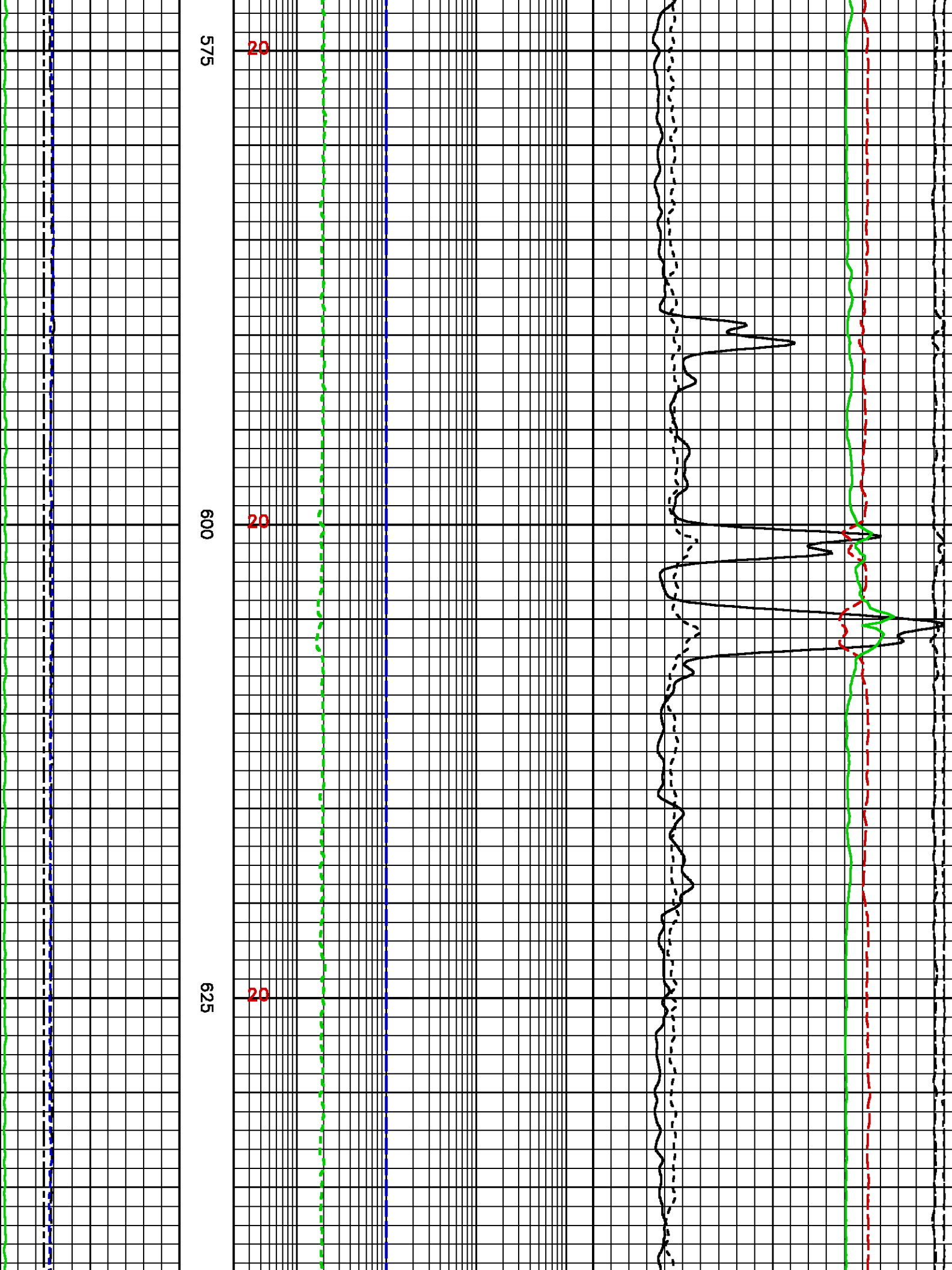


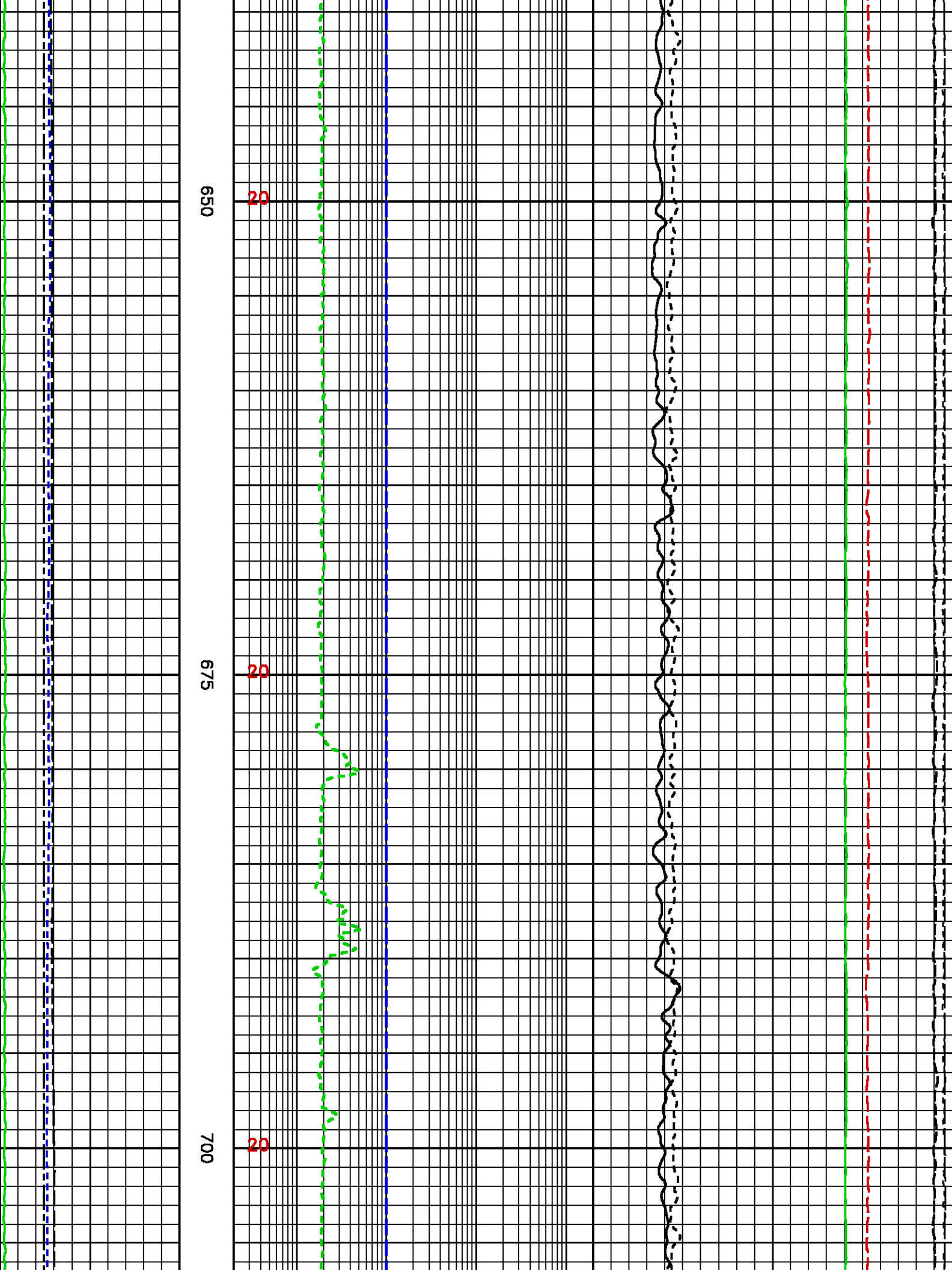
20

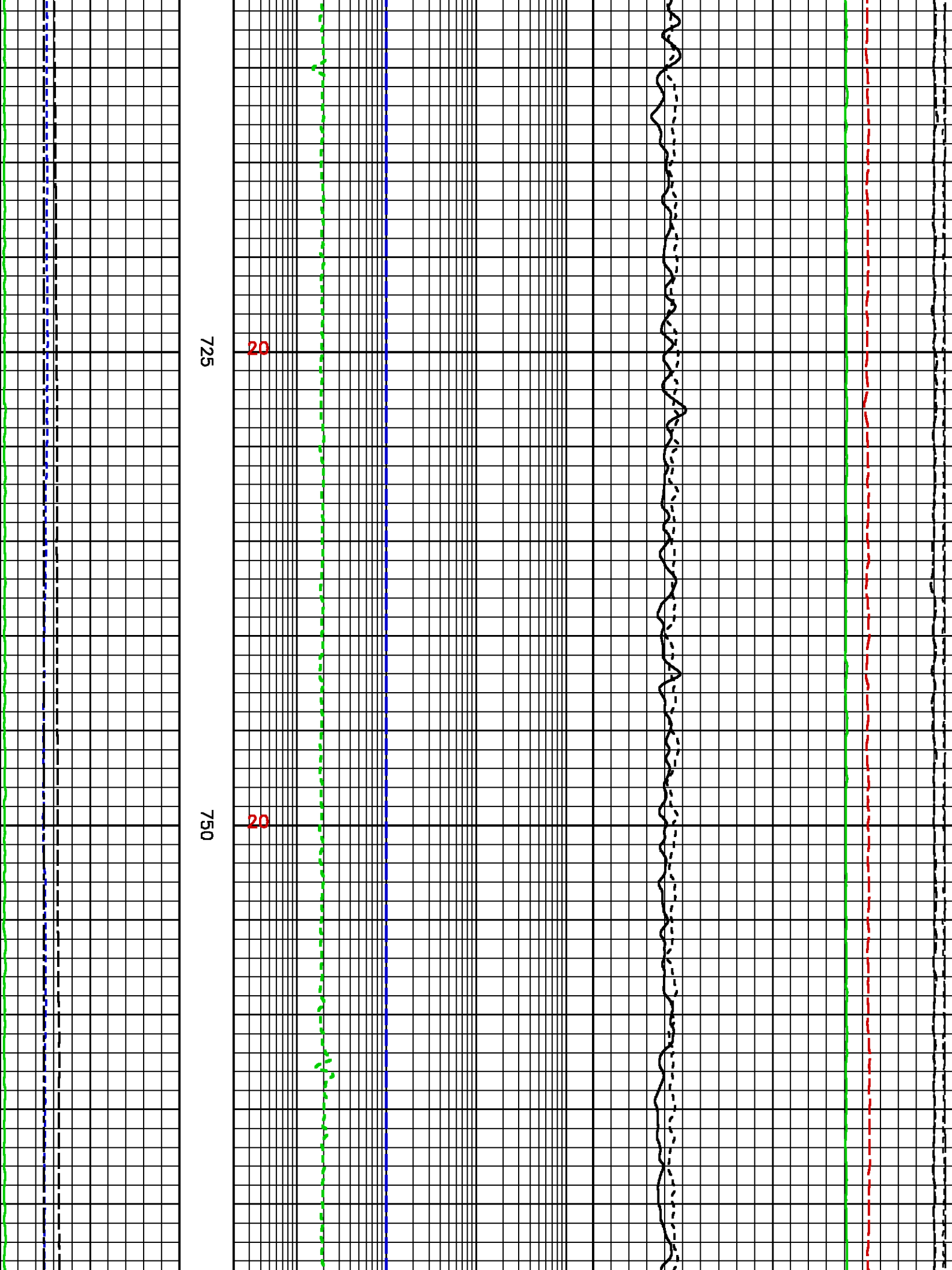
20

525

550

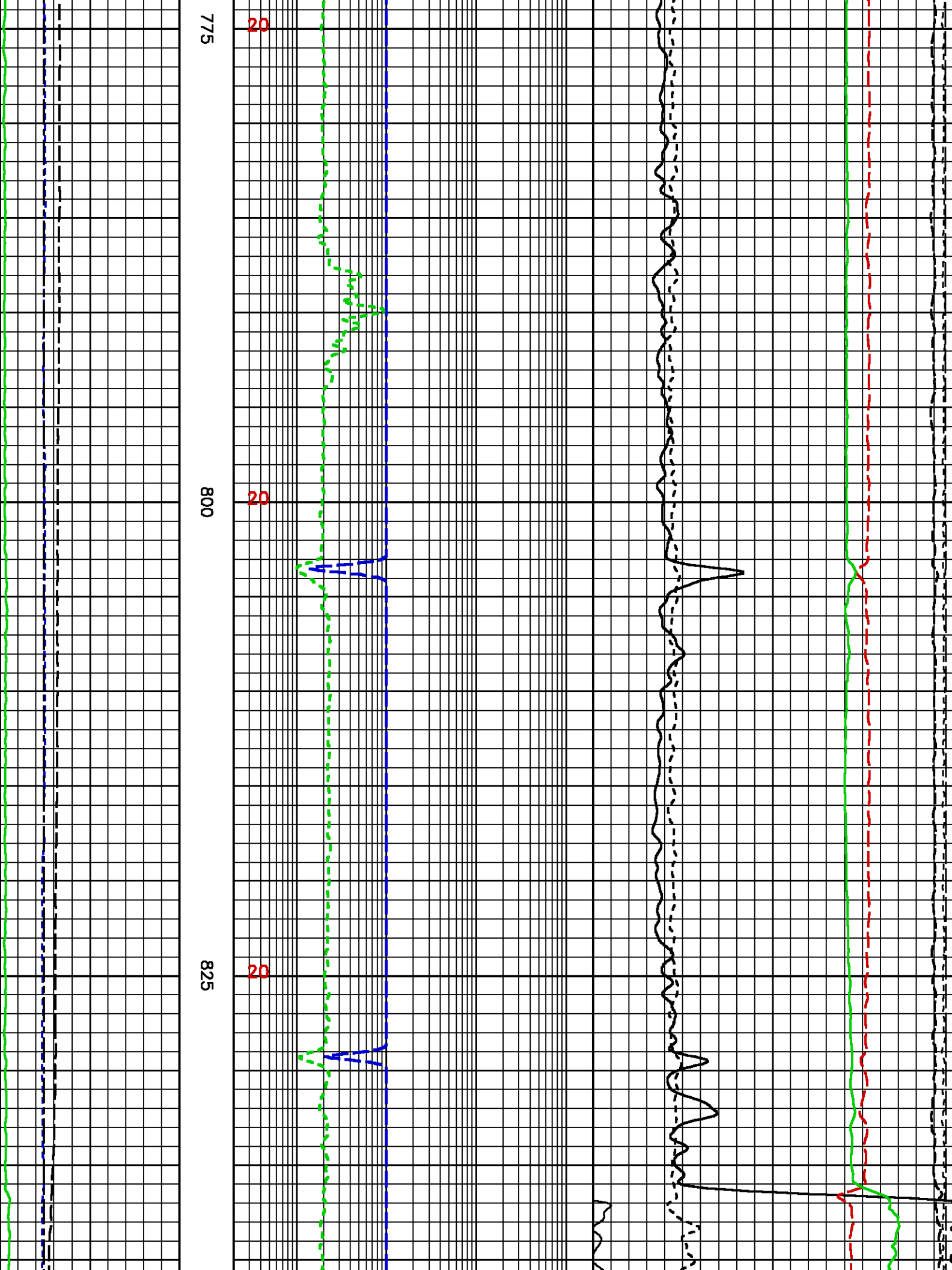


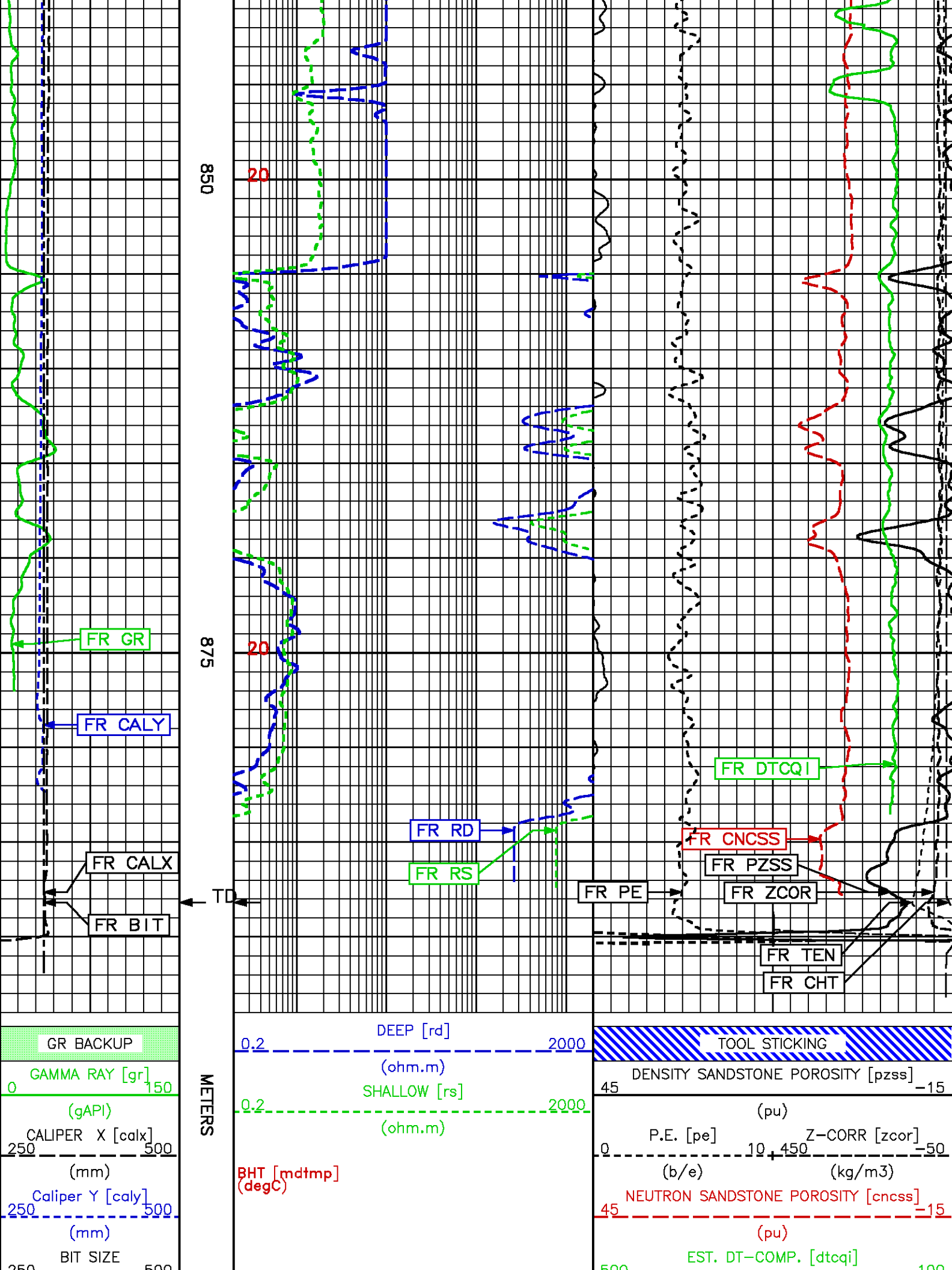




725

750





230 (mm)	300	300 (us/m)	DIFF. TENSION [ten] 1900-----100 (kgf)	CH-TENSION [cht] 5000-----0 (kgf)
-------------	-----	---------------	--	---

REPEAT LOG - SANDSTONE MATRIX

ECLIPS 6.0i Feb 21, 2008
Updates: 1

Tue Nov 10 11:43:26 2009

Pcrplt /main/62

Cplot

Pdf_Cpp /main/16

Fileview 5.42

PARAMETER AND FILTER SUMMARY REPORT

FILE: /data/pass/vul_rb2/k740d01.prm
LOGGING MODE: DEPTH DIRECTION: UP
TOP DEPTH: 812.521 m BOTTOM DEPTH: 890.549 m

SYMMETRIC FILTER

MEASUREMENT TYPE	PARAMETER	VALUE	UNITS	INTERVAL (m)	
TENSION	FILTER ()	medium (1)		TOP	BOTTOM
GR	FILTER ()	medium (1)		''	''

BOREHOLE & CEMENT

MEASUREMENT TYPE	PARAMETER	VALUE	UNITS	INTERVAL (m)	
BIT SIZE	BIT SIZE	311.000	mm	TOP	BOTTOM

ACOUSTIC AVAN CORRELATON

MEASUREMENT TYPE	PARAMETER	VALUE	UNITS	INTERVAL (m)	
MONOPOLE COMPRESSIONAL	FORMATION TYPE	UNIVERSAL		TOP	BOTTOM
	CORRELATION METHOD	NTH ROOT		''	''
	RESET TAPERS			''	''
	TAPER - LEFT END	98	us/m	''	''
	TAPER - RIGHT END	350	us/m	''	''
	FLOOR (UNIV. OPTION)	0.050		''	''

ACOUSTIC WAVEFORM FILTER

MEASUREMENT TYPE	PARAMETER	VALUE	UNITS	INTERVAL (m)	
WAVEFORM FILTER - FULLWAVE	SURFACE WAVE FILTER	ON		TOP	BOTTOM
	LOW FREQ CUTOFF	1500	Hz	''	''
	HIGH FREQ CUTOFF	20000	Hz	''	''

ACOUSTIC TCC CONTROL PARAMETERS

MEASUREMENT TYPE	PARAMETER	VALUE	UNITS	INTERVAL (m)	
GENERAL TCC PARAMETERS	AGC	ON		TOP	BOTTOM
GENERAL MONOPOLE TCC PARAMETERS	STACK LEVEL	1		''	''
	LOW FREQ	500		''	''
	HIGH FREQ	23		''	''
FULL WAVE MONOPOLE TCC PARAMETERS	ACG WINDOW	5184	us	''	''
	SAMPLE PERIOD	12		''	''
	RX DELAY	0	us	''	''

PARAMETER AND FILTER SUMMARY REPORT

FILE: /dat1a/pass/vul_rb2/k773v01.prm
LOGGING MODE: DEPTH DIRECTION: UP
TOP DEPTH: 815.035 m BOTTOM DEPTH: 893.973 m

SYMMETRIC FILTER

MEASUREMENT TYPE	PARAMETER	VALUE	UNITS	INTERVAL (m)	
TENSION	FILTER ()	medium (1)		TOP	BOTTOM
GR	FILTER ()	medium (1)		''	''
DLL	FILTER ()	medium (1)		''	''

BOREHOLE & CEMENT

MEASUREMENT TYPE	PARAMETER	VALUE	UNITS	INTERVAL (m)	
BIT SIZE	BIT SIZE	311.000	mm	TOP	BOTTOM
MUD SAMPLE RESISTIVITY	MUD SAMPLE TEMP	19.9	degC	''	''
	MUD SAMPLE RES	0.070	ohm.m	''	''
BOREHOLE TEMP from GRADIENT	Known BH REF TEMP	19.9	degC	''	''
	at BH REF DEPTH	300.0	m	''	''
	with TEMP GRADIENT	0.385	0.01 degC/m	''	''
BOREHOLE CORR DIAMETER SOURCE	CALIPER/FIXED DIA. (dibh*)	USE FIXED SIZE		''	''
BOREHOLE CORR DIAMETER	FIXED DIAMETER (dibh*)	311.000	mm	''	''
BH MUD RESISTIVITY SOURCE	RMUD SOURCE	MUD SAMP DERIVED		''	''

DLL PROCESSING

MEASUREMENT TYPE	PARAMETER	VALUE	UNITS	INTERVAL (m)	
DLL BOREHOLE CORRECTION	BOREHOLE CORR	OFF		TOP	BOTTOM
	DEEP TYPE	ENHANCED		''	''
	SHALLOW TYPE	ENHANCED		''	''
	TOOL POSITION	CENTRALIZED		''	''
	DEEP CURRENT RTN.	STANDARD		''	''
	ARMOR ISOLATOR	DUAL 12' ISOLATORS		''	''
	GRONINGEN RTN. DIST	40 FT RETURN		''	''

PARAMETER AND FILTER SUMMARY REPORT

FILE: /dat1a/pass/vul_rb2/k970a02.prm
LOGGING MODE: DEPTH DIRECTION: UP
TOP DEPTH: 807.478 m BOTTOM DEPTH: 892.020 m

SYMMETRIC FILTER

MEASUREMENT TYPE	PARAMETER	VALUE	UNITS	INTERVAL (m)	
CHT	FILTER ()	medium (1)		TOP	BOTTOM
GR MED RES	FILTER ()	medium (1)		''	''
CALIPER	FILTER ()	medium (1)		''	''
TENSION	FILTER ()	medium (1)		''	''
CN MED RES	FILTER ()	medium (1)		''	''
ZDL MED RES	FILTER (hrd1*)	medium		''	''
	FILTER (hrd1s*)	medium		''	''
	FILTER (hrd2*)	medium		''	''
	FILTER (hrd2s*)	medium		''	''
	FILTER (soft*)	medium		''	''

BOREHOLE & CEMENT

MEASUREMENT TYPE	PARAMETER	VALUE	UNITS	INTERVAL (m)	
CASING - BOREHOLE & CEMENT VOLUME	CASING O.D.	244.500	mm	TOP	BOTTOM
	CASING THICKNESS	8.400	mm	''	''
X-Y COMBINED CALIPER PROCESSING-FOCMYS	Caliper - FOCUS	X-Axis		''	''
BIT SIZE	BIT SIZE	311.000	mm	''	''
BOREHOLE CORR DIAMETER SOURCE	CALIPER/FIXED DIA. (cnbh*)	USE CALIPER		''	''
BOREHOLE CORR DIAMETER	FIXED DIAMETER (cnbh*)	311.000	mm	''	''

ACCELERATION PROCESSING

MEASUREMENT TYPE	PARAMETER	VALUE	UNITS	INTERVAL (m)	
ACCEL CORR SWITCH	ACCEL DEPTH CORR	CORRECTION ON		TOP	BOTTOM

CN PROCESSING

MEASUREMENT TYPE	PARAMETER	VALUE	UNITS	INTERVAL (m)	
------------------	-----------	-------	-------	--------------	--

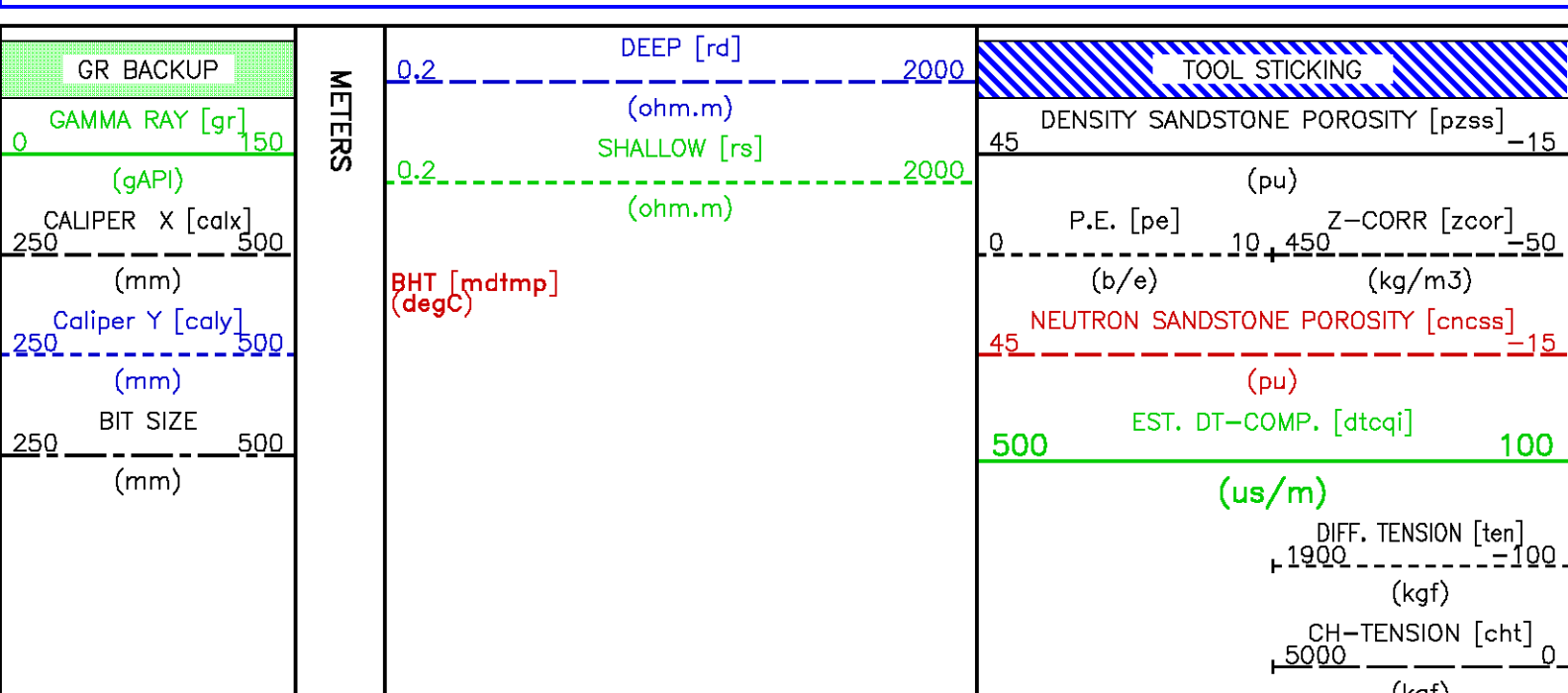
MEASUREMENT TYPE	PARAMETER	VALUE	UNITS	INTERVAL (m)
CN BOREHOLE CORRECTION	SALINITY BOREHOLE CORRECTION	0	ppm	TOP ''
CN CASING & CEMENT CORRECTION	CORRECTION	ON		''
	BIT SIZE BEHIND CSNG	444.500	mm	''

ZDL PROCESSING				
MEASUREMENT TYPE	PARAMETER	VALUE	UNITS	INTERVAL (m)
DENSITY POROSITY	RHOfluid	1.000	g/cm3	TOP ''
	RHOmatrix (sand)	2.650	g/cm3	'' ''

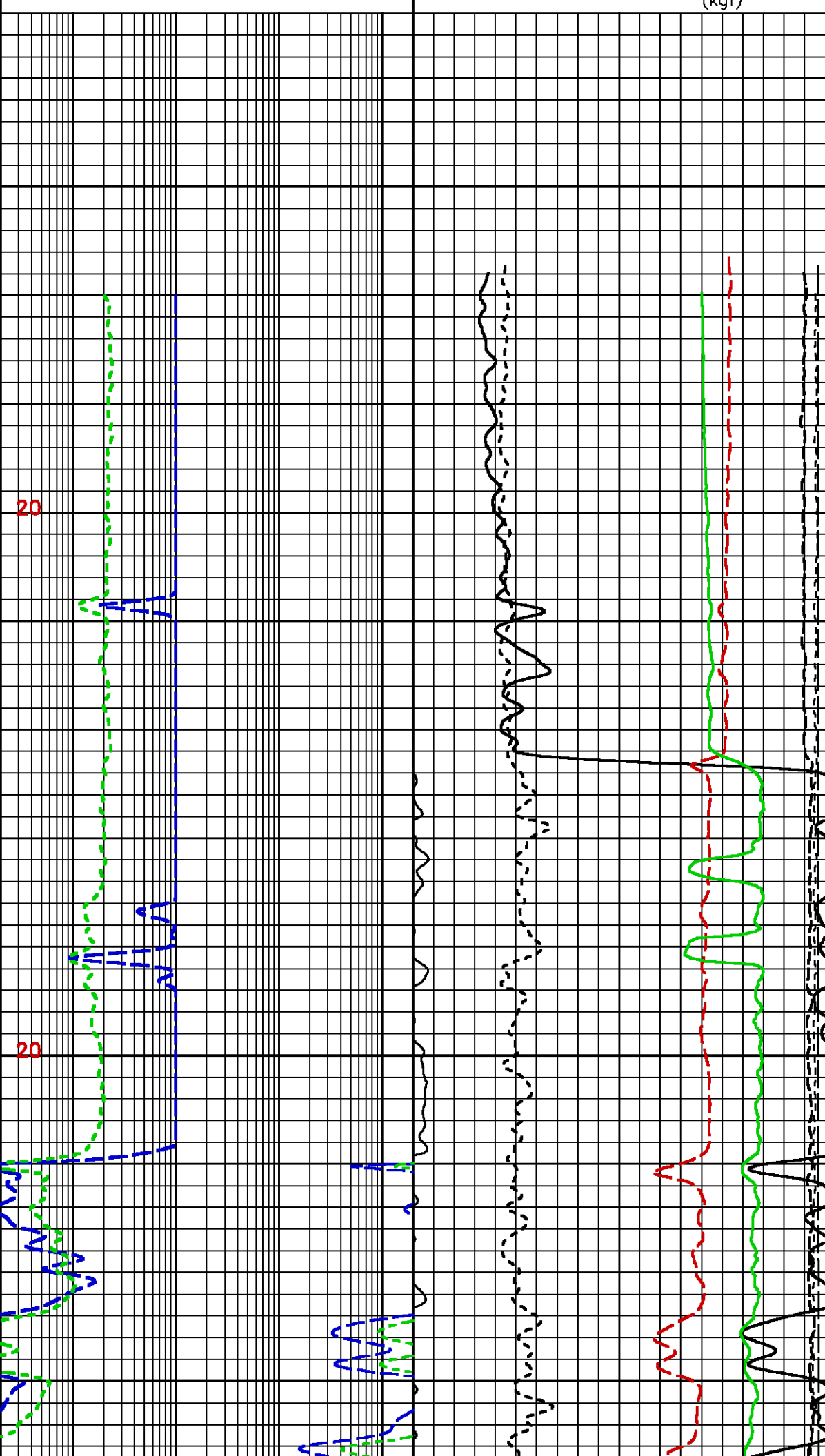
CURVE DESCRIPTION REPORT			
CURVE NAME	CURVE ALIAS	CREATION DATE	CURVE DESCRIPTION
F1:BIT	BIT	Nov 10 02:46:03 2009	BIT SIZE
F1:CALX	CALX	Nov 10 06:43:56 2009	CALIPER FROM X AXIS OF X-Y CALIPER(S)
F1:CALY	CALY	Nov 10 06:43:56 2009	CALIPER FROM Y AXIS OF X-Y CALIPER(S)
F1:CHT	CHT	Nov 10 06:43:56 2009	CABLE HEAD TENSION
F1:CNCSS	CNCSS	Nov 10 06:43:56 2009	BH SIZE CORR. SANDSTONE COMPENSATED NEUTRON POROSITY
F1:DTCQI	DTC	Nov 10 02:46:03 2009	COMPRESSIONAL WAVE SLOWNESS
F1:GR	GR	Nov 10 02:46:03 2009	GAMMA RAY
F1:MDTMP		Nov 10 06:43:56 2009	MUD TEMPERATURE
F1:PE	PE	Nov 10 06:43:56 2009	PHOTO ELECTRIC CROSS-SECTION
F1:PZSS	PZSS	Nov 10 06:43:56 2009	POROSITY FOR SANDSTONE MATRIX
F1:RD	RD	Nov 10 09:31:52 2009	DEEP RESISTIVITY
F1:RS	RS	Nov 10 09:31:52 2009	SHALLOW RESISTIVITY
F1:TEN	TEN	Nov 10 02:46:03 2009	DIFFERENTIAL TENSION
F1:ZCOR	ZCOR	Nov 10 06:43:56 2009	DENSITY CORRECTION

CURVE MEASURE POINT OFFSET							
CURVE	OFFSET (m)	CURVE	OFFSET (m)	CURVE	OFFSET (m)	CURVE	OFFSET (m)
BIT	0.00	CNCSS	3.35	PZSS	0.53	ZCOR	0.53
CALX	0.53	DTCQI	7.32	RD	3.81		
CALY	9.37	GR	13.64	RS	3.81		
CHT	0.00	PE	0.53	TEN	0.00		

Presentation	: cpu1:/dat1a/pass/vul_rb2/comp2_ss45_rpt.pdf [1:240 Scale]
Plot Interval	: 802.31 - 893.293 Meters
Data File 1	: F1 : cpu1:/dat1a/pass/vul_rb2/311_rpt.xtf
Created On	: Nov 10 06:43:56 2009
Company	: VULCAN MINERALS
Well	: VULCAN INVESTCAN RED BROOK #2
Field	: BAY ST. GEORGE BASIN
File Interval	: 797.357 - 893.293 Meters
Oct	: k740d

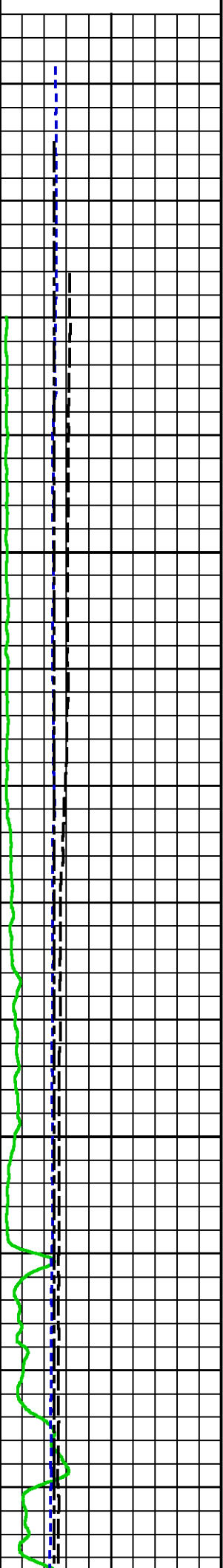


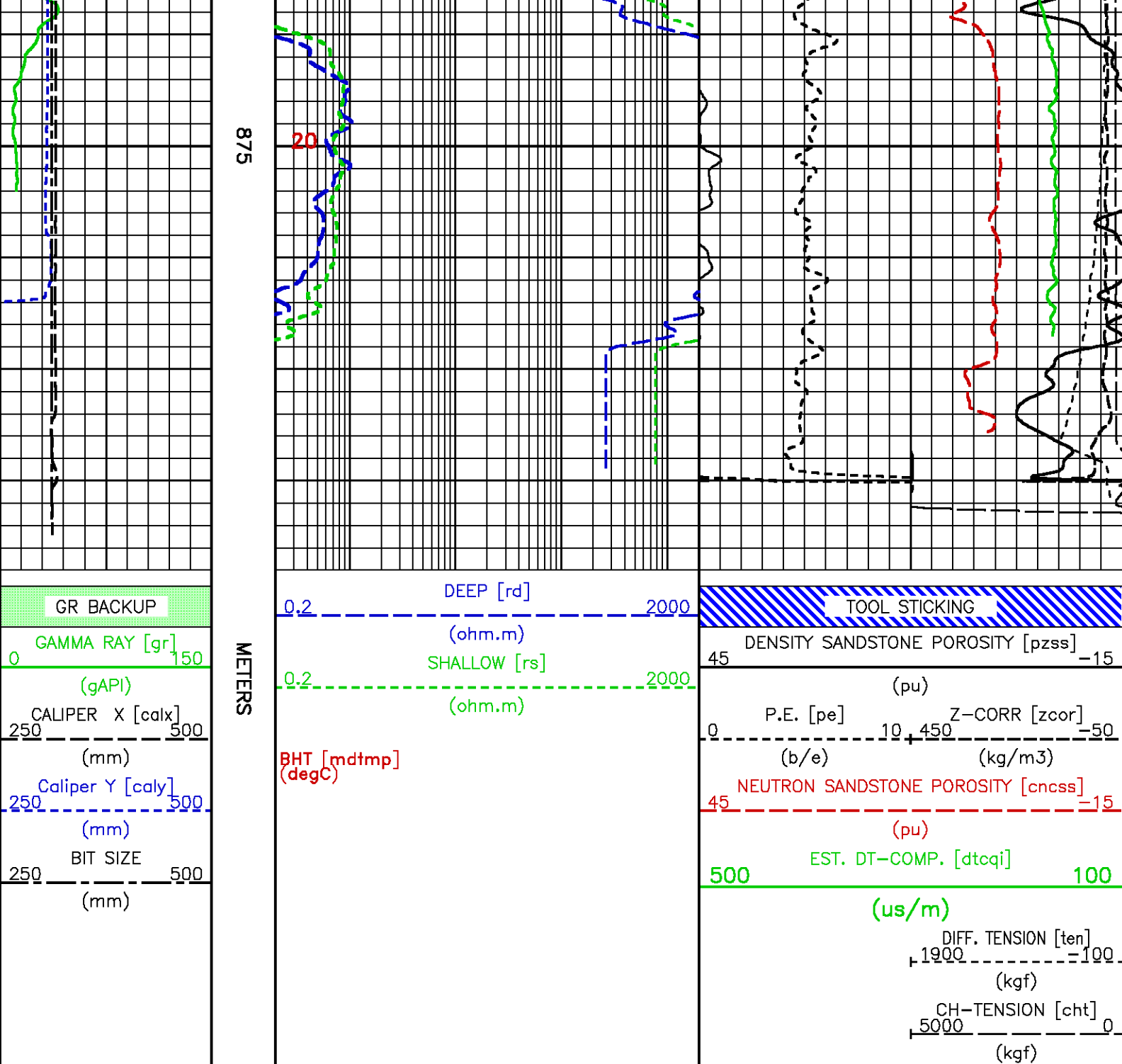
(kg)



825

850





MAIN LOG - GR/CN THROUGH CASING

ECLIPS 6.01 Feb 21, 2008
Updates: 1

Tue Nov 10 11:37:25 2009

Pcrplt /main/62

Cplot

Pdf_Cpp /main/16

Fileview 5.42

PARAMETER AND FILTER SUMMARY REPORT

FILE: /data/pass/vul_rb2/k970a04.prm
LOGGING MODE: DEPTH
DIRECTION: UP

LOGGING MODE: DEPTH: 13.705 m DIRECTION: OF
TOP DEPTH: 13.705 m BOTTOM DEPTH: 240.114 m

SYMMETRIC FILTER

MEASUREMENT TYPE	PARAMETER	VALUE	UNITS	INTERVAL (m)	
CHT	FILTER ()	medium (1)		TOP	BOTTOM
GR MED RES	FILTER ()	medium (1)		"	"
TENSION	FILTER ()	medium (1)		"	"
CN MED RES	FILTER ()	medium (1)		"	"

BOREHOLE & CEMENT

MEASUREMENT TYPE	PARAMETER	VALUE	UNITS	INTERVAL (m)	
CASING - BOREHOLE & CEMENT VOLUME	CASING O.D.	244.500	mm	TOP	BOTTOM
	CASING THICKNESS	8.400	mm	"	"
X-Y COMBINED CALIPER PROCESSING-FOCM	SY Caliper - FOCUS	X-Axis		"	"
BIT SIZE	BIT SIZE	311.000	mm	"	"
BOREHOLE CORR DIAMETER SOURCE	CALIPER/FIXED DIA. (cnbh*)	USE FIXED SIZE		"	"
BOREHOLE CORR DIAMETER	FIXED DIAMETER (cnbh*)	323.000	mm	"	"

ACCELERATION PROCESSING

MEASUREMENT TYPE	PARAMETER	VALUE	UNITS	INTERVAL (m)	
ACCEL CORR SWITCH	ACCEL DEPTH CORR	CORRECTION ON		TOP	BOTTOM

CN PROCESSING

MEASUREMENT TYPE	PARAMETER	VALUE	UNITS	INTERVAL (m)	
CN BOREHOLE CORRECTION	SALINITY	0	ppm	TOP	BOTTOM
	BOREHOLE CORRECTION	ON		"	"
CN CASING & CEMENT CORRECTION	CORRECTION	ON		"	"
	BIT SIZE BEHIND CSNG	444.500	mm	"	"

CURVE DESCRIPTION REPORT

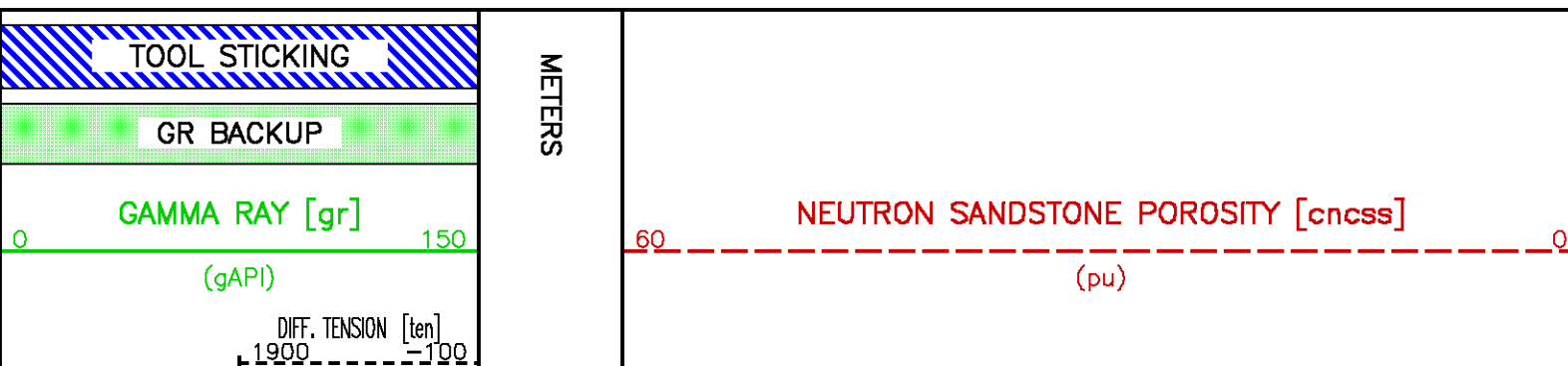
CURVE NAME	CURVE ALIAS	CREATION DATE	CURVE DESCRIPTION
F1:CHT	CHT	Nov 10 07:53:33 2009	CABLE HEAD TENSION
F1:CNCSS	CNCSS	Nov 10 07:53:33 2009	BH SIZE CORR. SANDSTONE COMPENSATED NEUTRON POROSITY
F1:GR	GR	Nov 10 07:53:33 2009	GAMMA RAY
F1:MMRK	MMRK	Nov 10 07:53:33 2009	MINUTE MARK
F1:TEN	TEN	Nov 10 07:53:33 2009	DIFFERENTIAL TENSION

CURVE MEASURE POINT OFFSET

CURVE	OFFSET (m)	CURVE	OFFSET (m)	CURVE	OFFSET (m)	CURVE	OFFSET (m)
CHT	0.00	CNCSS	3.35	GR	5.68	TEN	0.00

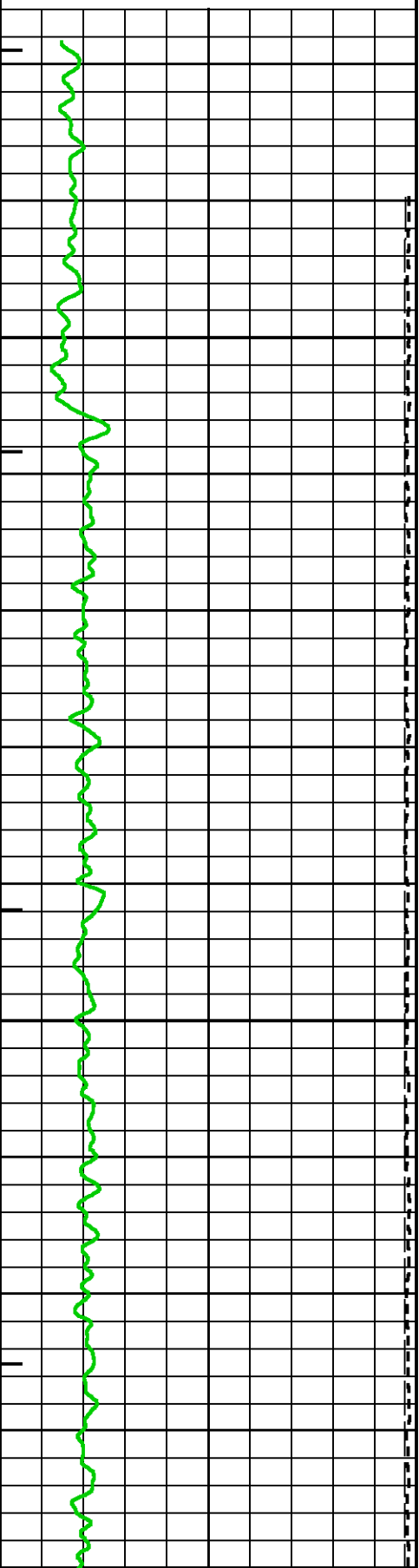
Presentation : cpu1:/dat1a/pass/vul_rb2/gr_cn.pdf [1:240 Scale]
Plot Interval : 13.6398 - 241.325 Meters

Data File 1 : F1 : cpu1:/dat1a/pass/vul_rb2/311_gr-cn.tif
Created On : Nov 10 07:53:33 2009
Company : VULCAN MINERALS
Well : VULCAN INVESTCAN RED BROOK #2
Field : BAY ST. GEORGE BASIN
File Interval : 13.6398 - 241.325 Meters
Oct : k970a



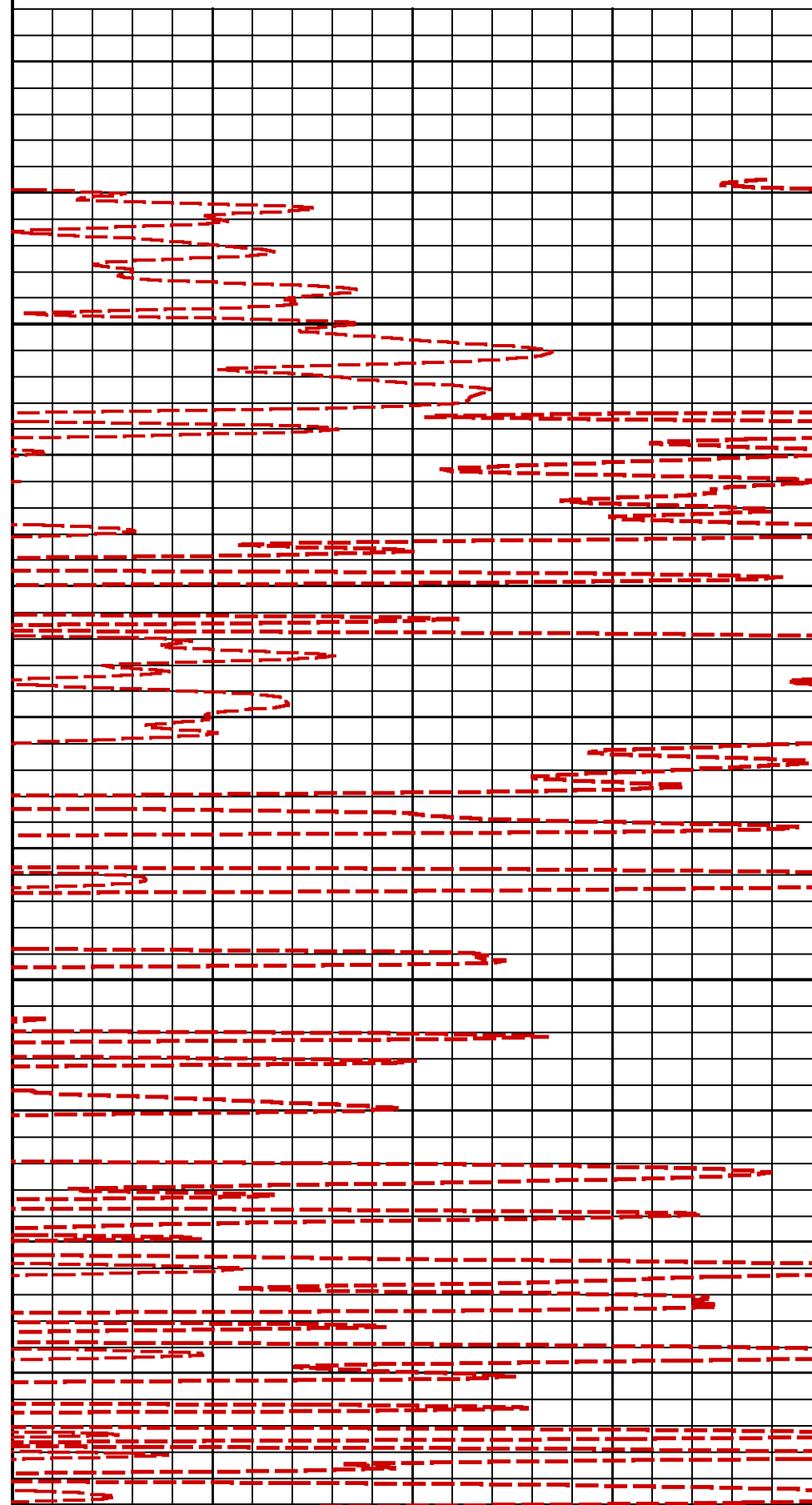
(kgf)
CH-TENSION [cht]
5000 0
(kgf)

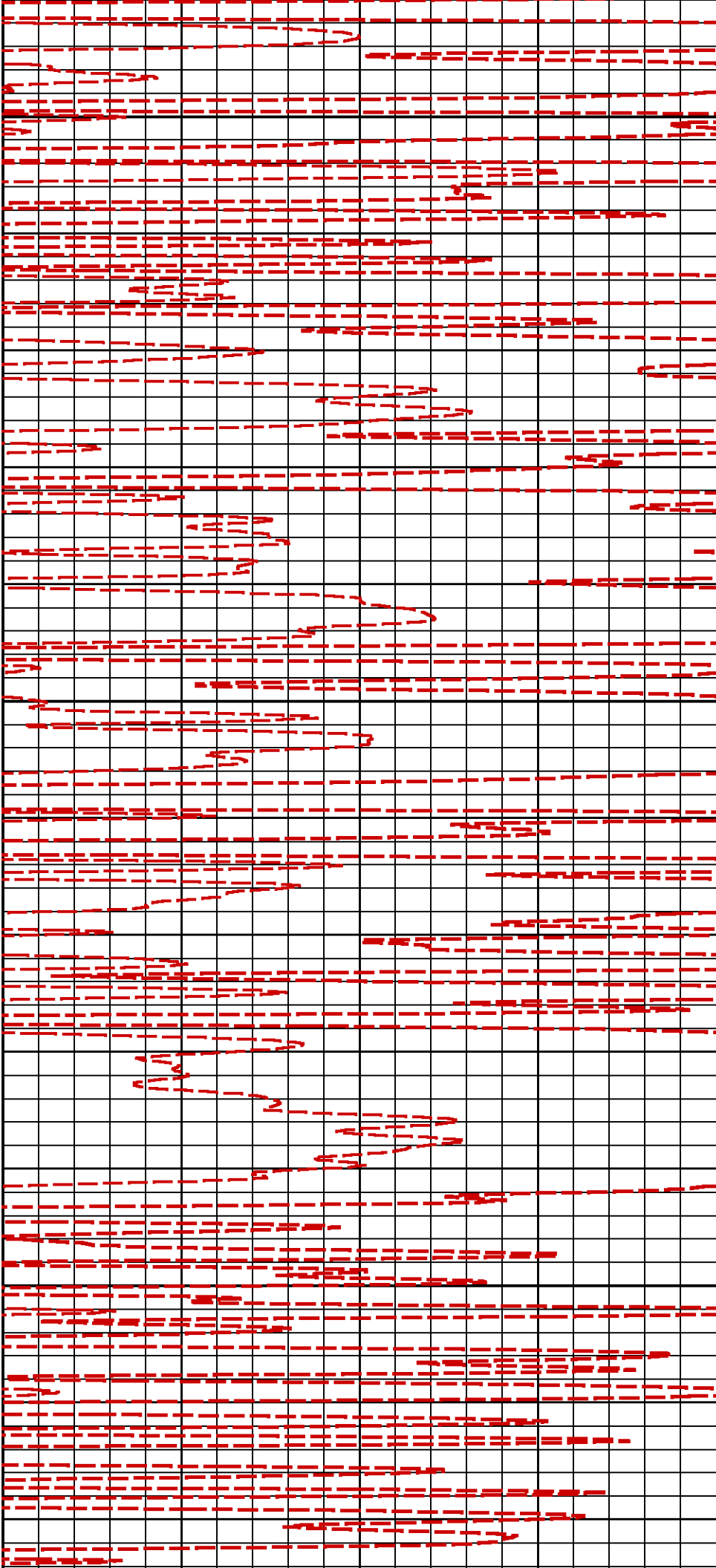
MINUTE MARK
1



25

50

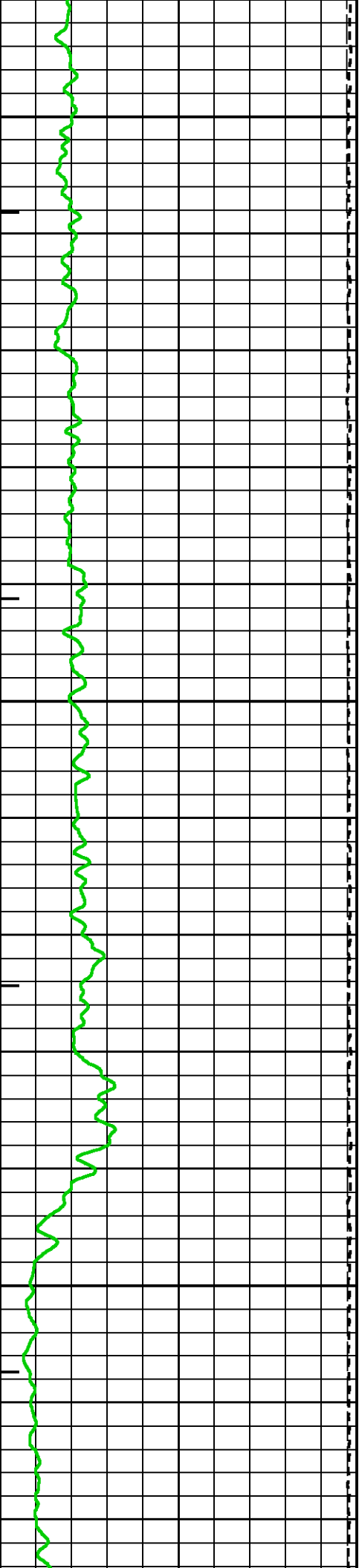


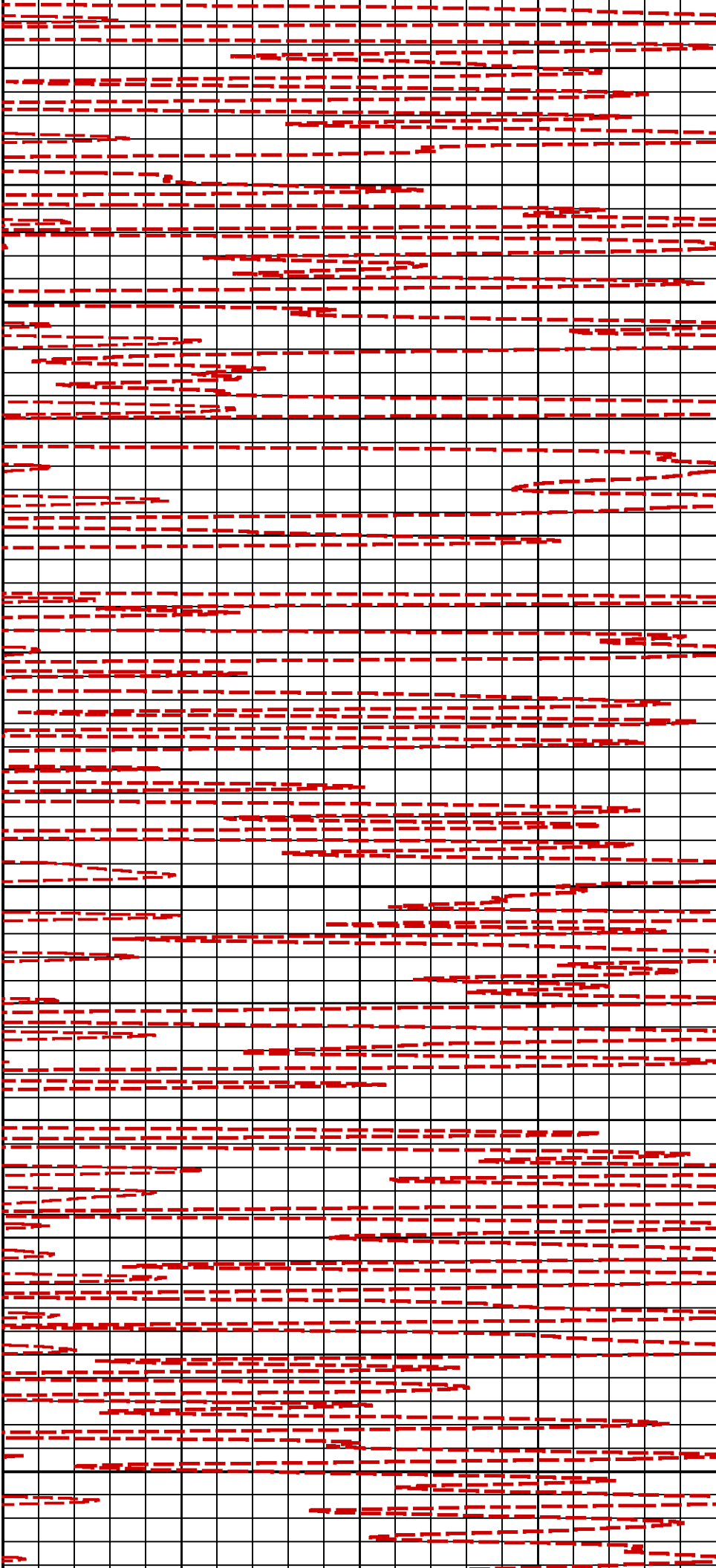


75

100

125

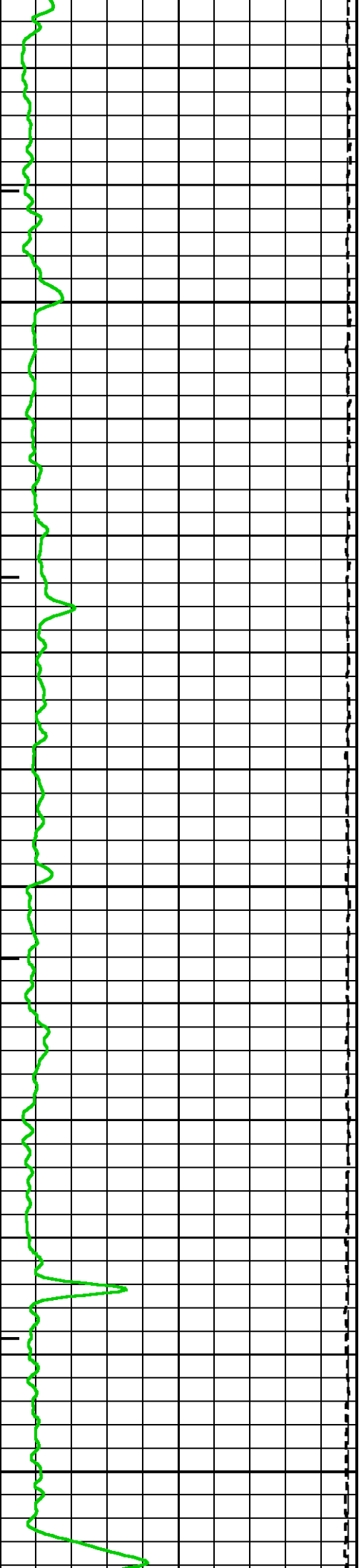


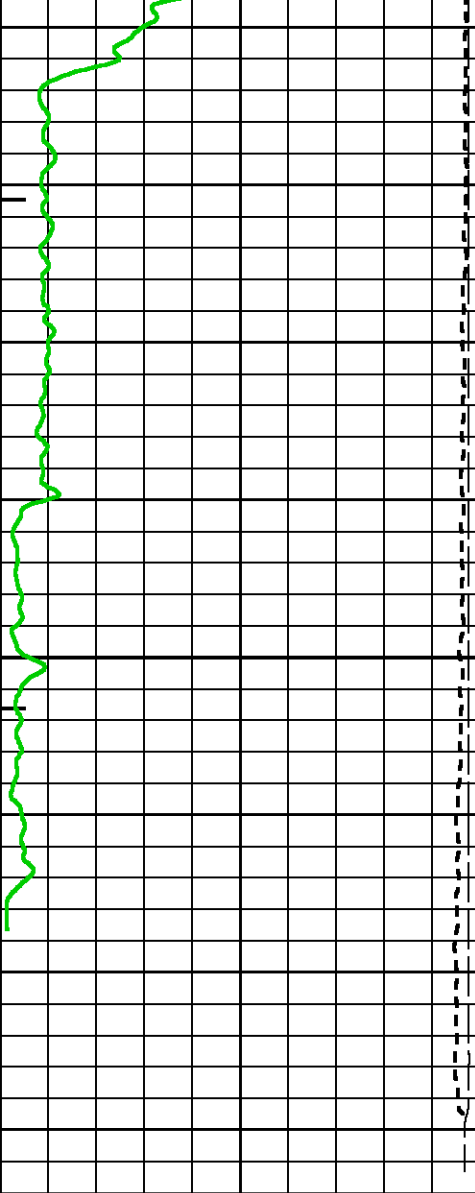


150

175

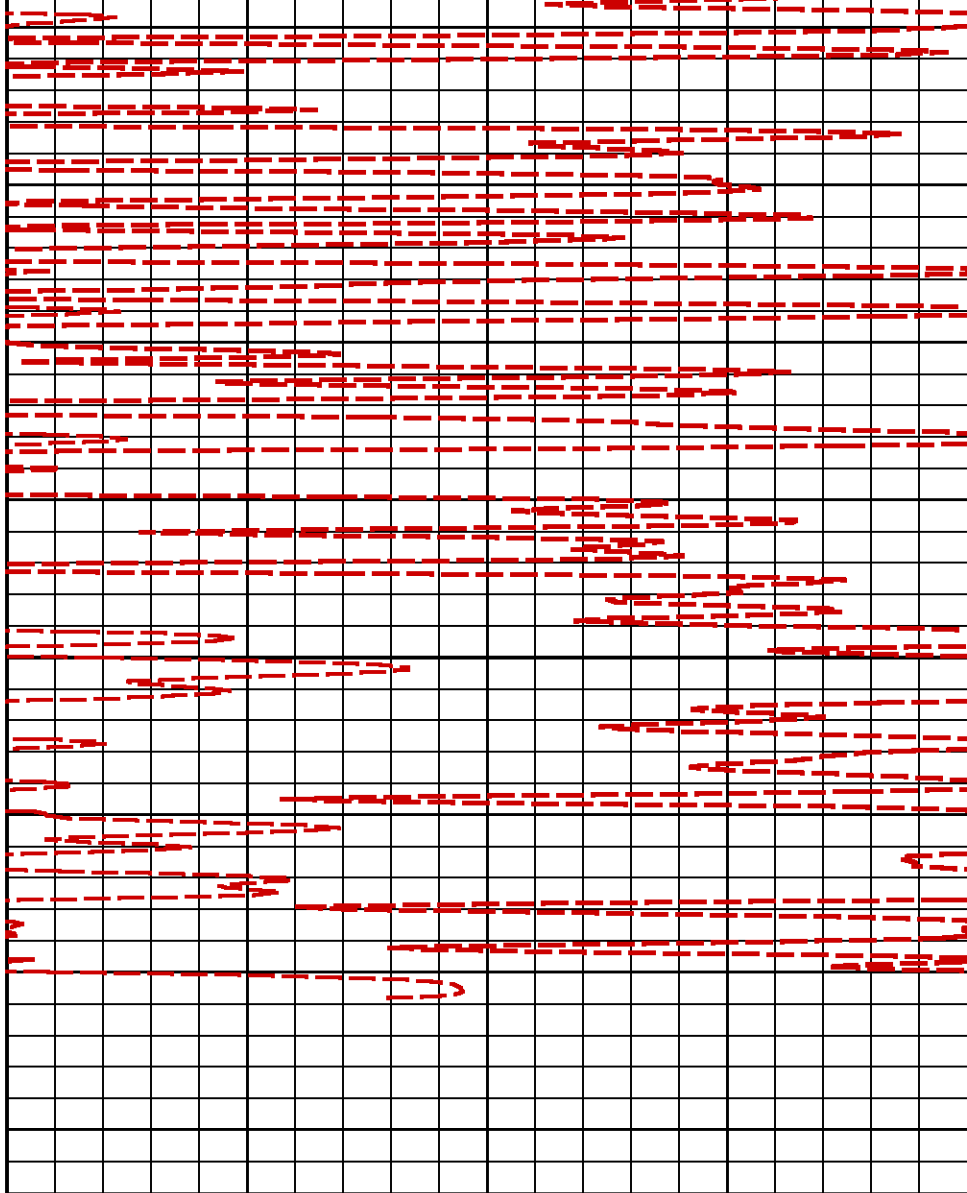
200





225

METERS



TOOL STICKING

GR BACKUP

GAMMA RAY [gr] 0 150

(gAPI)

DIFF. TENSION [ten] 1900 100 (kgf)

CH-TENSION [cht] 5000 0 (kgf)

MINUTE MARK 1

NEUTRON SANDSTONE POROSITY [cncss] 60 0 (pu)

CAL PRIMARY CALIBRATION SUMMARY

TOOL #: 4410XA 10171015

DATE/TIME PERFORMED: Wed Nov 4 11:44:57 2009

UNIT #: 3885TA HL4126

	SIZE (mm)	VALUE	MULTIPLIER	ADD
SMALL RING	203.200	418		
LARGE RING	304.800	552	26.09531 25.62200 27.17800	-1224.31909

CAL BEFORE LOG VERIFICATION SUMMARY

TOOL #: 4410XA 10171015 DATE/TIME PERFORMED: Tue Nov 10 06:12:44 2009 DAYS SINCE CAL: 5

UNIT #: 3885TA HL4126

ACT SIZE (mm)	VALUE	MULTIPLIER	ADD	SIZE (mm)
327.000	591.5	26.09531	-1223.60278	327.02 318.11 335.89

CAL AFTER LOG VERIFICATION SUMMARY

TOOL #: 4410XA 10171015 DATE/TIME PERFORMED: Tue Nov 10 07:48:28 2009 DAYS SINCE CAL: 5

UNIT #: 3885TA HL4126

ACT SIZE (mm)	VALUE	MULTIPLIER	ADD	SIZE (mm)
327.000	593.1	26.09531	-1265.35535	327.02 318.11 335.89

CN PRIMARY CALIBRATION SUMMARY

TOOL #: 2436XA 402534

DATE/TIME PERFORMED: Thu Oct 29 21:22:55 2009

UNIT #: 3885TA HL4126

CALIBRATOR #: 2437XB 113140

SOURCE #: 4718XA N--930

SSN DT CPS	LSN DT CPS	SSN/LSN	MCF	CNRATIO	CN PU
4814.47	876.33	5.49389	1.04425	5.73700	25.241

CN BEFORE LOG VERIFICATION SUMMARY

TOOL #: 2436XA 402534 DATE/TIME PERFORMED: Tue Nov 10 06:09:36 2009 DAYS SINCE CAL: 11

UNIT #: 3885TA HL4126 CALIBRATOR #: INTRNL N/A

SSN DT CPS	LSN DT CPS	SSN/LSN	TEMP (degC)	HV (V)	LV (V)
991.73	994.09	0.99762	16.9	1349.8	4.612
		0.95000 1.05000	138.0	1250.0 1450.0	4.300 5.000

CN AFTER LOG VERIFICATION SUMMARY

TOOL #: 2436XA 402534 DATE/TIME PERFORMED: Tue Nov 10 07:49:40 2009 DAYS SINCE CAL: 11

UNIT #: 3885TA HL4126 CALIBRATOR #: INTRNL N/A

SSN DT CPS	LSN DT CPS	SSN/LSN	TEMP (degC)	HV (V)	LV (V)
990.73	993.09	0.99762	20.2	1349.8	4.612
		0.95000 1.05000	138.0	1250.0 1450.0	4.300 5.000

CAL PRIMARY CALIBRATION SUMMARY

TOOL #: 2223XA 10130454 DATE/TIME PERFORMED: Thu Oct 29 20:30:22 2009

UNIT #: 3885TA HL4126

	SIZE (mm)	VALUE	MULTIPLIER	ADD
SMALL RING (Arm)	158.000	1112.8		
LARGE RING (Arm)	305.000	2952.0	0.07993	69.05827
PAD CLOSED		2656.4	0.06350	-168.68140

CAL BEFORE LOG VERIFICATION SUMMARY

TOOL #: 2223XA 10130454 DATE/TIME PERFORMED: Tue Nov 10 06:12:16 2009 DAYS SINCE CAL: 11

UNIT #: 3885TA HL4126

	VALUE	MULTIPLIER	ADD	SIZE (mm)
ARM	3123.6	0.07993	69.05827	318.7

PAD 2807.6 0.06350 -168.68140 9.6

ACTUAL MEASURED
(mm) (mm)
DIAMETER (arm+pad) 327.000 328.3
318.8 337.2

CAL AFTER LOG VERIFICATION SUMMARY

TOOL #: 2223XA 10130454 DATE/TIME PERFORMED: Tue Nov 10 07:48:54 2009 DAYS SINCE CAL: 11

UNIT #: 3885TA HL4126

	VALUE	MULTIPLIER	ADD	SIZE (mm)
ARM	3123.2	0.07993	69.05827	318.7
PAD	2810.4	0.06350	-168.68140	9.8

ACTUAL MEASURED
(mm) (mm)
DIAMETER (arm+pad) 327.000 328.5
318.8 337.2

ZDL PRIMARY CALIBRATION SUMMARY

TOOL: 2223XA 10130454 DATE/TIME PERFORMED: Thu Oct 29 21:09:57 2009

UNIT: 3885TA HL4126 CALB BLKS: 2225XA 112691 CS SRC: 4705XA 11347B PAD TYPE: PADTYP 7.5" PAD

SS CS PK (Channel)	LS CS PK (Channel)	SS_BKGD (cps)	LS BKGD (cps)
224.2	225.5	1254.4	1712.7
220.0 230.0	220.0 230.0		

	SS (cps)	LS (cps)	SHR	DEN (kg/m3)	CORR (kg/m3)	PE (b/e)
MG (LO PE)	36749.1	12491.4	0.814 0.720 0.890	1700.000	2.000	1.860
AL	22973.2	1410.1		2649.000	-19.000	
AL + SHIM	30441.2	2431.8		2550.000	101.000	
MG + SHIM (HI PE)	18480.2	6132.0	0.329 0.280 0.360			8.260
RATIO AL + SHIM/AL	1.33 1.30 1.40	1.72 1.60 1.80				
RATIO MG/AL	1.60 1.58 1.70	8.86 8.55 9.55				

ZDL BEFORE LOG VERIFICATION SUMMARY

TOOL #: 2223XA 10130454 DATE/TIME PERFORMED: Tue Nov 10 06:10:25 2009 DAYS SINCE CAL: 11

UNIT #: 3885TA HL4126

	TOTAL (cps)	CSPK (Channel)	HV (V)
LS	3342.1	224.9	1437.0
	3332.1 3352.1	220.0 230.0	1250.0 1550.0
SS	22354.8	224.2	1395.0
	22344.8 22364.8	220.0 230.0	1250.0 1550.0
	LV (V)	PAD CURRENT (mA)	
	5.0	83.2	
	4.8 5.2	80.0 120.0	

ZDL AFTER LOG VERIFICATION SUMMARY

TOOL #: 2223XA 10130454 DATE/TIME PERFORMED: Tue Nov 10 07:49:58 2009 DAYS SINCE CAL: 11

UNIT #: 3885TA HL4126

	TOTAL (cps)	CSPK (Channel)	HV (V)
LS	3342.1	224.9	1438.7
	3332.1 3352.1	220.0 230.0	1250.0 1550.0
SS	22354.8	224.2	1401.7
	22344.8 22364.8	220.0 230.0	1250.0 1550.0
	LV (V)	PAD CURRENT (mA)	
	5.0	83.2	
	4.8 5.2	80.0 120.0	

CALIBRATION / VERIFICATION SUMMARY

Source File: /dat1a/pass/vul_rb2/k740d.tp1

GR PRIMARY CALIBRATION SUMMARY

TOOL #: 1329XA 153116

DATE/TIME PERFORMED: Thu Nov 5 13:51:18 2009

UNIT #: 3885TA HL4126

CALB JIG #: 4702NK WA-724

	BACKGROUND (cts/s)	CALBRTR ON (cts/s)	CR DIFF (cts/s)	MULT	BACKGROUND (gAPI)	CALBRTR ON (gAPI)	CALBRTR (gAPI)
GR	182.89	1033.18	850.3 830.0 960.0	0.176	32.26	182.26	150

GR PRIMARY VERIFICATION SUMMARY

TOOL #: 1329XA 153116

DATE/TIME PERFORMED: Thu Nov 5 13:53:49 2009

UNIT #: 3885TA HL4126

VERI JIG #: 4702NK WA-724

	BACKGROUND (cts/s)	CALBRTR ON (cts/s)	MULT	BACKGROUND (gAPI)	CALBRTR ON (gAPI)	DIFF. (gAPI)
GR	179.67	1032.67	0.176	31.70	182.17	150.48 140.00 160.00

GR BEFORE LOG VERIFICATION SUMMARY

TOOL #: 1329XA 153116 DATE/TIME PERFORMED: Tue Nov 10 02:13:12 2009 DAYS SINCE CAL: 4

UNIT #: 3885TA HL4126

VERI JIG #: 4702NK WA-724

	BACKGROUND (cts/s)	CALBRTR ON (cts/s)	MULT	BACKGROUND (gAPI)	CALBRTR ON (gAPI)	DIFF. (gAPI)
GR	103.78	949.18	0.176	18.31	167.45	149.14 140.48 160.48

GR AFTER LOG VERIFICATION SUMMARY

TOOL #: 1329XA 153116 DATE/TIME PERFORMED: Tue Nov 10 05:05:28 2009 DAYS SINCE CAL: 4

UNIT #: 3885TA HL4126

VERI JIG #: 4702NK WA-724

	BACKGROUND (cts/s)	CALBRTR ON (cts/s)	MULT	BACKGROUND (gAPI)	CALBRTR ON (gAPI)	DIFF. (gAPI)
GR	106.60	944.82	0.176	18.81	166.68	147.87 139.14 159.14

CALIBRATION / VERIFICATION SUMMARY

DLL PRIMARY CALIBRATION SUMMARY

TOOL #: 1239MA 185440

DATE/TIME PERFORMED: Tue Nov 10 09:27:07 2009

UNIT #: 3885TA HL4126

	Sig Low (raw)	Sig High (raw)	Scale Add	Scale Mult	Engr Low (ohm.m)	Engr High (ohm.m)
ED Deep Volt	326.1	3994.1				
ID Deep Curr	1731.1	22.4				
ES Shallow Volt	365.0	3210.4				
IS Shallow Curr	1220.8	10.5				
RD Deep Resist			-0.00001	0.01983	9.5	9500.0
RS Shallow Resist			0.00002	0.01880	15.9	11700.0

DLL AFTER LOG VERIFICATION SUMMARY

TOOL #: 1239MA 185440

DATE/TIME PERFORMED: Tue Nov 10 10:40:09 2009

DAYS SINCE CAL: 0

UNIT #: 3885TA HL4126

	Sig Low (raw)	Sig High (raw)	Scale Add	Scale Mult	Engr Low (ohm.m)	Engr High (ohm.m)
ED Deep Volt	331.3	3995.4				
ID Deep Curr	1729.2	22.5				
ES Shallow Volt	365.8	3210.6				
IS Shallow Curr	1222.8	10.6				
RD Deep Resist			-0.00001	0.01983	9.7 9.0 10.0	9457.8 8000.0 11000.0
RS Shallow Resist			0.00002	0.01880	15.9 15.4 16.4	11656.5 10200.0 13200.0



Baker Atlas

 COMPANY
WELL
FIELD
PROVINCE

 VULCAN MINERALS INC.
VULCAN INVESTCAN RED BROOK #2
BAY ST.GEORGE BASIN
NEWFOUNDLAND AND LABRADOR

FILE NO:

API NO:

LOCATION:

ELEVATIONS:

KB 61.8 M

UID:

N/A

LICENSE:



BH LOC. LSD:

LAT 48.2679591667 LONG -58.7501141667

DF

GL 55.5 M

ETCENSE:

ADW 2009-116-03-

DATE

09-NOV-2009